

# Mahaweli Statistical Hand Book 2021



MAHAWELI AUTHORITY OF SRI LANKA



# **Mahaweli Authority of Sri Lanka**

**Mahaweli Authority of Sri Lanka  
was Established Under  
Act No. 23 of 1979**

## **Vision**

“To become the best institution in Sri Lanka, utilizing land and water in optimal level for sustainable agriculture, renewable energy, environmental conservation being uplifted the living standards of the community settled in Mahaweli Systems”

## **Mission**

“The optimal use of land and water resources for innovative and sustainable agricultural productivity based on modern technology with the contribution of renewable energy generation, green environment and eco-tourism for the upliftment of Mahaweli community and their living standards”





## Messages



Hon. Chamal Rajapaksa

Minister of Irrigation

The Mahaweli Development Programme is the largest multi-purpose development programme ever carried out in Sri Lanka. The Mahaweli Development Programme is actively contributing to the agriculture and rural development irrigation and power generation targets outlined with the national policy direction of “Vision of Prosperity” by His Excellency the President. Information with regard to the Mahaweli Authority would be useful for planners, decision makers, researchers and required people. Therefore, I would like to appreciate all those who contributed to present this valuable publication.



Hon. Siripala Gamlath

State Minister of Canals & Common  
Infrastructure Development in  
Settlements in Mahaweli Zones

The Mahaweli Development Program is one of the largest development programs in the country and plays a vital role in the socio-economic and environmental development process in the country. The Mahaweli Authority of Sri Lanka that has taken many initiatives to enhance the economic development of the country in line with the policy directives of “Vision of Prosperity” by His Excellency the President. This contains a summary of relevant data and information that will be useful for various needs. I would like to thank everyone who supported in compiling this publication.



# Reliable Statistics for Development Planning



Mr. Anura Disanayake

Secretary  
Ministry of Irrigation

The Multi-Purpose Mahaweli Development programme, which was commenced with a wide range of development objectives in the country, had made a significant contribution to the strengthening of the socio-economic condition of the country collecting, analyzing and dissemination of data on various sectors such as socio-economic, agriculture, irrigation and environment would be of immense use for all the concerned parties. It is vital to ensure that such statistical data are reliable and presented in an analytical manner. I take this opportunity to extend my appreciation to all the relevant officers of The Mahaweli Authority of Sri Lanka for their dedication in publishing this useful document.



Mrs. R.M.C.M. Herath

State Secretary of Canals & Common  
Infrastructure Development in  
Settlements in Mahaweli Zones

The Mahaweli Development Programme is a capital intensive, long-term public sector investment to utilize the untapped resources of the Mahaweli river basin and allied basins in Sri Lanka. The Mahaweli Authority of Sri Lanka that has taken many initiatives to enhance the economic development of the country. This Statistical Hand Book includes key statistics related to the Mahaweli Authority. I hope that it would be useful for planners, decision makers and researchers. The staff supported to complete this task is to be congratulated for the preparation and presentation of this publication.

# **The Mahaweli Development Programme**

The Mahaweli Ganga Development Programme, the largest integrated rural development programme ever undertaken in Sri Lanka was based on water resources of Mahaweli and allied six river basins. The main objectives were to increase agricultural production, hydropower generation, settlement of landless families, opening up of new employment opportunities and regional development.

The Mahaweli Development Programme is based on the Master Plan prepared jointly by UNDP/FAO Team and Sri Lankan Engineers in 1965/68. The Plan, which envisaged development of about 365,000 ha. of irrigable land in the dry Zone as well as about 508 MW of hydropower, was divided into 3 phases, each including several projects for stepwise implementation over a period of 30-years. Implementation of the plan began in 1970. In late 1977 the Government decided to accelerate the programme. The programme selected five major projects comprising five dams and hydropower plants with a total potential power capacity of 200-600 MW and downstream development of about 112,000 Ha in Systems B, C, H and G. Management of Udawalawe and System L Projects were also handed over to the MASL in 1982 and 1987 respectively.

Rs.124.59 billion (at current prices) has been invested on the Mahaweli Programme from 1970 to 2020. A bulk of the investment was directed towards the completion of large reservoirs with power houses along with the trans-basin irrigation diversion systems and establishments of associated downstream development.

By the end 2020, the project was able to open up 106,735 ha of irrigable lands, constructing of 9,585 km of canal networks. At present total road network is 10,134 Km. 347,285 families live in the Mahaweli Areas. 23 new towns and 35 Area Centers were established.

Moragahakanda - Kaluganga, the last and the largest project under Mahaweli Master Plan commenced in 2007, with the objectives of providing water for drinking and industrial purposes, increasing cropping intensity in Systems H, IH, MH, D & G and generating hydro power.

The estimated cumulative project benefits at the end of 2020, in terms of value of food and power generation at current prices, exceeded Rs. 1,500 billion. Agriculture, Livestock & Inland Fishing benefit accounted for Rs. 992 billion and balance was from the power generation.

Special Production improvement programmes for agricultural crops, livestock and inland fisheries were conducted under agricultural development and “Vistas of Prosperity and Splendour” Programme during the year for improving the settler income and their living standard.

This Mahaweli Statistical Hand Book presents achievements of the Mahaweli Development Programme in details up to 2020. Updates will be available on our web site [www.mahaweli.gov.lk](http://www.mahaweli.gov.lk)

<b>Contents</b>	<b>Page</b>
Summary of Basic Information - 2020	I
1. Background Information	1 - 5
1.1 <i>Administrative Areas Belonging to the Mahaweli Authority of Sri Lanka</i>	1
1.2 <i>Basic Information of Mahaweli Areas</i>	3
2. Irrigation and Power Generation	6 - 11
2.1 <i>Mahaweli Major Dams and Reservoirs</i>	6
2.2 <i>Power Generation Under Mahaweli Development Programme</i>	9
2.3 <i>Mahaweli Power Generation to the National Grid</i>	10
2.4 <i>Irrigation and Water Management</i>	10
2.5 <i>Monthly Actual Rainfall Data in the Irrigation Reservoirs of Mahaweli Areas</i>	11
3. Land Development	12 - 14
4. Settlement and Population	15 - 16
4.1 <i>Settler Families in Mahaweli Areas</i>	15
4.2 <i>Population in Mahaweli Areas</i>	15
4.3 <i>Settler Assistance by Mahaweli Areas</i>	16
5. Social and Economic Infrastructure Facilities	18 - 21
5.1 <i>Social Infrastructure Facilities</i>	18
5.2 <i>Economic Infrastructure Facilities</i>	18
6. Agriculture and Livestock	22 - 47
6.1 <i>Cultivation Land Extent in Mahaweli Areas</i>	22
6.2 <i>Asweddumized Extent (Irrigated) and Cropping Intensity in Mahaweli Areas</i>	22
6.3 <i>Land Extent Cultivated and Production in Mahaweli Areas</i>	23
6.4 <i>Cultivated Extent, Production and Average Yield of Paddy in Mahaweli Areas</i>	25
6.5 <i>Paddy Extent and Production in Mahaweli Areas as a Percentage of Sri Lanka</i>	26
6.6 <i>Paddy and Rice Availability in Mahaweli Areas</i>	26
6.7 <i>Extent and Production of Other Field Crops in Mahaweli Areas</i>	27

6.8 <i>Performance of the Other Field Crops by the System</i>	28
6.9 <i>Mahaweli Production and National Production of Selected Crops</i>	38
6.10 <i>Extent and Production of Fruits in Mahaweli Areas</i>	39
6.11 <i>Performance of the Fruits by the System</i>	39
6.12 <i>Extent and Production of Perennial Crops in Mahaweli Areas</i>	44
6.13 <i>Performance of the Perennial Crops by the Systems</i>	44
6.14 <i>Livestock &amp; Inland Fish Production and Value</i>	48
6.15 <i>Mahaweli Contribution to National Production</i>	49
7. <i>Investment Projects in Mahaweli Areas</i>	50 - 51
8. <i>Information Related to Social Empowerment</i>	52 - 53
8.1 <i>Farmer organization in Mahaweli Areas</i>	52
8.2 <i>Women's Small Group in Mahaweli Areas</i>	52
8.3 <i>Samurdhi Beneficiaries in Mahaweli Areas</i>	53
8.4 <i>Kidney Patients in Mahaweli Areas</i>	53
9. <i>Environment</i>	54
9.1 <i>Elephant Fences in Mahaweli Areas</i>	54
10. <i>Investment</i>	55
10.1 <i>Annual Budget and Expenditure - Mahaweli Authority of Sri Lanka</i>	55
11. <i>Project Benefits and Cost</i>	56 - 58
12. <i>Local Funded Projects Implemented by Mahaweli Authority of Sri Lanka</i>	59 - 62
Annexure 1: <i>Blocks and Units in Mahaweli Areas</i>	63 - 71
Annexure 2: <i>Other Information</i>	72 - 75
Annexure 3: <i>Related Map in Mahaweli Area</i>	76 - 87
Annexure 4: <i>Water Distribution Diagram</i>	88
Annexure 5: <i>List of Acronyms</i>	89
Annexure 6: <i>Organization Structure</i>	90
Annexure 7: <i>Contact Details</i>	91 - 93
Annexure 8: <i>Important Events of Mahaweli</i>	94

## Summary of Basic Information - 2020

### Mahaweli Authority of Sri Lanka

	Item	Amount
<b>Basic Information</b>	Districts	15
	Gross Area (Ha)	1,319,225
	No. of Systems	10
	No. of Blocks	49
	No. of Units	233
	No. of Town Centers	23
	No. of Area Centers	35
	No. of Families	347,285
	Population	1,233,181
	Farmer Organizations	1,067
	No. of Samurdhi Beneficiaries	90,205
	No. of Kidney Patients	10,928
	Women's Small Groups	695
	Houses	328,263
	Latrines	300,811
	Wells	74,519
<b>Economic and Social Infrastructure Facilities</b>	Schools	626
	Hospitals	54
	Ayurveda Hospitals	37
	Health Centers	223
	Post Offices	228
	Co-Operatives	112
	Banks	230
	Irrigation Canals (Km)	9,585
	Roads (Km)	10,134
	Reservoirs and Anicuts	19
	Gross Storage of Major Dams & Reservoirs (MCM)	3,784
	Tanks	654



	Item	Amount
Agriculture	Asweddumiazed Extent (Ha)	106,735
	Annual Cultivated Extent - Irrigable (Ha)	190,371
	Cropping Intensity (%)	178
	<b>Extent (Ha)</b>	
	Paddy	169,141
	OFC	23,711
	Fruits	13,298
	Other Perennial Crops	5,818
	<b>Total</b>	<b>211,968</b>
	<b>Production (Mt)</b>	
	Paddy	970,191
	OFC	201,135
	Fruits	169,355
	Other Perennial Crops	23,867
	<b>Total</b>	<b>1,364,548</b>
Livestock and Inland Fish	Milk Production (Liters Mn)	28
	Chicken Production (Mt'000)	11
	Egg Production (Eggs Mn)	39
	Inland Fish Production (Mt'000)	6
	Prawns (Mt)	11
	Ornamental Fish (Mn Pairs)	27
Power Generation	<b>Power Generation (GWh)</b>	
	Main Reservoirs	1,547
	Mini Hydro Power	234
	<b>Total - Power Generation</b>	<b>1,781</b>
Other Information	No. of Farms	17
	No. of Circuits	33
	No. of Nurseries	13
	Office Buildings	378
	Quarters	3,259
	Stores	380
	Approved Cadre	4,859
	No. of Employees ( end of 31/12/2020)	4,280

# 1. Background Information

## 1.1 Administrative Areas Belonging to the Mahaweli Authority of Sri Lanka

Table 1.1: Administrative Districts and Divisional Secretariats Belonging to the Mahaweli Areas

	System	Districts		Divisional Secretariat Divisions	
		No. of Districts	District	No of D.S.D.	D.S Divisions
1	B	2	Polonnaruwa, Batticaloa	3	1. Welikanda 2. Dimbulagala 3. Koralai Pattu North (Vaharai)
2	C	3	Ampara, Badulla, Polonnaruwa	3	1. Mahiyanganaya 2. Dehiaththakandiya 3. Dimbulagala
3	D	2	Trincomalee, Polonnaruwa	2	1. Kantale 2. Madirigiriya
4	G	2	Polonnaruwa, Matale	2	1. Elahera 2. Laggala - Pallegama
5	H	2	Anuradhapura, Kurunegala	10	1. Thambuttegama 2. Rajanganaya 3. Thalawa 4. Nochchiyagama 5. Ehetuwewa 6. Galgamuwa 7. Nuwaragam Palatha Central 8. Palagala 9. Galnewa 10. Ipalogama
6	L	3	Mullaitivu, Anuradhapura, Vavuniya	5	1. Welioya 2. Padawiya 3. Vavuniya South 4. Vavuniya North 5. Kebithigollewa

Table 1.1: Administrative Districts and Divisional Secretariats Belonging to the Mahaweli Areas

	System	Districts		Divisional Secretariat Divisions	
		No. of Districts	District	No of D.S.D.	D.S Divisions
7	Huruluwewa	2	Anuradhapura, Matale	5	1. Palagala
					2. Kekirawa
					3. Palugaswewa
					4. Naula
					5. Dambulla
8	Udawalawa	3	Ratnapura, Hambantota, Monaragala	7	1. Embilipitiya
					2. Sewanagala
					3. Sooriyawewa
					4. Ambalanthota
					5. Angunukolapelassa
					6. Thangalla
					7. Hambanthota
9	Rambakenoya	2	Ampara, Badulla	3	1. Mahaoya
					2. Padiyathalawa
					3. Rideemaliyadda
10	E /	2	Kandy, Matale	2	1. Minipe
					2. Wilgamuwa
	Victoria	3	Kandy, Nuwara Eliya, Matale	7	1. Kundasale
					2. Medadumbara
					3. Gangawatakorale
					4. Gampola
					5. Kothmale
					6. Naula
					7. Patha Hewaheta

Source: Resident Project Manager's Office, Mahaweli Authority of Sri Lanka

## 1.2 Basic Information of Mahaweli Areas

Table 1.2 : Blocks and Units of Mahaweli Areas

	System	Blocks	Units
1	B	8	48
2	C	7	31
3	D	2	6
4	G	4	17
5	H	7	26
6	L	3	16
7	Huruluwewa	5	13
8	Udawalawa	6	39
9	E*	4	17
10	Rambakenoya	3	20
	<b>Total</b>	<b>49</b>	<b>233</b>

\* Victoria 2 Blocks and 7 Units

Source: Resident Project Manager's Office, Mahaweli Authority of Sri Lanka

Table 1.3 : Gross Area, Development Area, Town Centers and Area Centers of Mahaweli Areas

	System	Gross Area (Ha)	Development Area (Ha)	Town Centers	Area Centers
1	B	94,225	69,044	3	7
2	C	73,110	55,293	2	6
3	D	68,863	68,863	1	1
4	G	30,889	19,670	2	5
5	H	80,803	57,234	5	3
6	L	199,210	29,087	1	2
7	Huruluwewa	67,248	67,248	3	-
8	Udawalawa	225,541	51,293	3	8
9	E /	17,620	17,620	-	-
	Victoria	311,118	11,297	1	3
10	Rambakenoya	150,598	150,598	2	-
	<b>Total</b>	<b>1,319,225</b>	<b>597,247</b>	<b>23</b>	<b>35</b>

Source: Land Use Planning Division, Mahaweli Authority of Sri Lanka

Table 1.4 : Town and Area Centers in Mahaweli Areas

	System	Town Centers	Area Centers
1	B	<ol style="list-style-type: none"> <li>1. Welikanda</li> <li>2. Aralaganvila</li> <li>3. Manampitiya</li> </ol>	<ol style="list-style-type: none"> <li>1. Dimbulagala</li> <li>2. Sewanapitiya</li> <li>3. Ellewewa</li> <li>4. Damminna</li> <li>5. Senapura</li> <li>6. Aselapura</li> <li>7. Singhapura</li> </ol>
2	C	<ol style="list-style-type: none"> <li>1. Dehiaththakandiya</li> <li>2. Giradurukotte</li> </ol>	<ol style="list-style-type: none"> <li>1. Nuwaragala</li> <li>2. Siripura</li> <li>3. Sadunpura</li> <li>4. Medagama</li> <li>5. Weheragala</li> <li>6. Mahawenawela</li> </ol>
3	D	<ol style="list-style-type: none"> <li>1. Bisopura</li> </ol>	<ol style="list-style-type: none"> <li>1. Bisopura</li> </ol>
4	G	<ol style="list-style-type: none"> <li>1. Laggala</li> <li>2. Bakamoona</li> </ol>	<ol style="list-style-type: none"> <li>1. Diyabeduma</li> <li>2. Aththanakadawala</li> <li>3. Heerati Oya</li> <li>4. Wellewela</li> <li>5. Thorapitiya</li> </ol>
5	H	<ol style="list-style-type: none"> <li>1. Nochchiyagama</li> <li>2. Thambuththegama</li> <li>3. Thalawa</li> <li>4. Galnewa</li> <li>5. Meegalawa</li> </ol>	<ol style="list-style-type: none"> <li>1. Bulnewa</li> <li>2. Mahailuppallama</li> <li>3. Eppawala</li> </ol>

Table 1.4 : Town and Area Centers in Mahaweli Areas

	System	Town Centers	Area Centers
6	L	1. Sampathnuwara	1. Ethawatunuwewa 2. Kiriibbanwewa
7	Huruluwewa	1. Madatugama 2. Galkiriyagama 3. Palugaswewa	
8	Udawalawa	1. Embilipitiya 2. Sooriyawewa 3. Angunukolapelessa	1. Sevanagala 2. Kiriibbanwewa 3. Kuttigala 4. Thunkama 5. Mayurapura 6. Udawalawa 7. Barawakubuka 8. Mamadala
9	E /		
	Victoria	1. Digana	1. Theldeniya 2. Kundasale 3. Kothmale
10	Rambaken Oya	1. Maha Oya 2. Padiyathalawa	

Source: Land Use Planning Division, Mahaweli Authority of Sri Lanka



## 2. Irrigation and Power Generation

### 2.1 Mahaweli Major Dams and Reservoirs

Table 2.1: Mahaweli Major Dams and Reservoirs

No	Reservoir	District	Dam Type	Height (m)	Crest Length (m)	Catchment Area (km <sup>2</sup> )	Surface Area (km <sup>2</sup> )	Gross Storage (MCM)	Generating Capacity (MW)
1	Victoria	Kandy/ Nuwara Eliya	Double Curvature Concrete arch	122	520	1,891	24	722	70x03
2	Randenigala	Kandy	Rock fill with central Rock Impervious earth core	94	485	2,330	24	802	63x02
3	Rantabe	Kandy & Badulla	Concrete - Gravity	42	415	3,118	1	6	24.5x02
4	Kothmale	Nuwara Eliya	Rock fill with upstream Concrete membrane	87	600	544	7	171	67x03
5	Polgolla	Kandy	Low Concrete Weir with Gated Spillway and Bridge	15	144	788	1	4	20x02

Table 2.1: Mahaweli Major Dams and Reservoirs

No	Reservoir	District	Dam Type	Height (m)	Crest Length (m)	Catchment Area (km <sup>2</sup> )	Surface Area (km <sup>2</sup> )	Gross Storage (MCM)	Generating Capacity (MW)
6	Bowatenna	Matale	Earth & Concrete	29	327	382	5	24	20x02
7	Ullithiya/ Rathkinda	Ampara/ Badulla	Earth fill	25	3,980	282	23	145	
8	Maduruoya	Polonnaruwa	Rock fill with center core	40	1,090	453	64	597	2.5x02
9	Dambulu Oya	Matale	Homogeneous earth fill	12	1,600	189	4	12	02+01
10	Kandalama	Matale	Homogeneous earth fill	21	1,700	103	8	34	-
11	Kalawewa	Anuradhapura	Homogeneous earth fill	15	6,800	552	25	104	-
12	Minipe Anicut	Badulla	Concrete gravity-Orgee	09	226	-		-	-
13	Loggaloya	Badulla	Earthfill	28	2,250	250	6	48	

Table 2.1: Mahaweli Major Dams and Reservoirs

No	Reservoir	District	Dam Type	Height (m)	Crest Length (m)	Catchment Area (km <sup>2</sup> )	Surface Area (km <sup>2</sup> )	Gross Storage (MCM)	Generating Capacity (MW)
14	Heppolaoya	Badulla	Earth fill	19	1,632	120	3	13	4.775
15	Diyabanaoya	Badulla	Earth fill	8	825	20	1	1	
16	Chandrikawewa	Ratnapura	Earth fill	19	2,500	181	4	28	
17	Udawalawa	Ratnapura & Monaragala	Earth fill	37	4,000	1,176	34	269	2x03
18	Moragahakanda Main Dam	Matale	Earth Core Rock fill	59	471	768	29	558	(2x7.5) + (2x5)
	Saddle Dam - 01		Roller Compacted Concrete	58	375	-	-	-	-
	Saddle Dam - 02		Homogeneous earth fill	21	275	-	-	-	-
19	Kaluganga Main Dam	Matale	Earth Core Rock fill	68	659	128	8	248	-
	Saddle Dam		Earth Core Rock fill	28	686	-	-	-	-

Source: Major Dams &amp; Reservoir Operation, Mahaweli Authority of Sri Lanka

## 2.2 Power Generation Under Mahaweli Development Programme

Table 2.2: Power Generation

Power Station	Generating Capacity (Mw)	2020 (GWh)
<b>1. Main Reservoir</b>		
Victoria	210 (70x3)	507.13
Kotmale	201 (67 x 3)	399.94
Randenigala	126 (63x2)	267.23
Rantembe	49 (24.5x2)	128.48
Ukuwela	40 (20x2)	180.12
Bowatenna	40 (20x2)	55.24
Udawalawa	6 (LB-2x2+RB-2x1)	8.66
<b>Sub Total</b>	<b>672.00</b>	<b>1,546.81</b>
<b>2. Mini Hydro Power Generation</b>		
<b>Private sector</b>		
Maduru oya LB Sluice Itself	5.00	16.90
Branford	2.50	9.41
Koladeniya	1.20	4.90
Lenadora	1.40	6.23
Rajjammana (Palapathwala)	6.00	27.95
Maduruoya ii (LB Drop Structure)	2.00	6.42
Lower Kothmale	4.80	16.71
Ross state	3.80	19.35
Owala	2.80	12.70
Maduru oya iii (LB Main Canal Drop)	0.60	2.51
Dambulu Oya reservoir MHP	3.25	11.16
Ankanda	6.50	29.66
<b>Sub Total</b>	<b>39.85</b>	<b>163.89</b>
<b>Mahaweli Authority of Sri Lanka</b>		
Moragahakanda	25.00	70.37
<b>Sub Total</b>	<b>25.00</b>	<b>70.37</b>
<b>Total (Mini Hydro)</b>	<b>64.85</b>	<b>234.25</b>
<b>Grand Total</b>	<b>736.85</b>	<b>1,781.06</b>

Source : Ceylon Electricity Board (CEB)

## 2.3 Mahaweli Power Generation to the National Grid

Table 2.3: Mahaweli Power Generation to the National Grid

Item	2020
<b>Hydro Power</b>	<b>3,911</b>
Mahaweli	1,547
Non Mahaweli	2,364
<b>Mini Hydro</b>	<b>1,047</b>
Mahaweli - Mini Hydro	234
Non Mahaweli	813
<b>Total Mahaweli</b>	<b>1,781</b>
<b>National Power</b>	<b>15,714</b>
<b>Mahaweli Power Generation</b>	
% from Total Hydropower	40
% from Mini Hydro	22
% from Total National Power	11

Source : Economic & Social Statistics 2021, Central Bank of Sri Lanka

## 2.4 Irrigation and Water Management

Table 2.4: Water Issues, Water Duty and Water Productivity by Mahaweli Areas

System		Maha 2019/2020	Yala 2020
B	Water Issues (MCM)	224.40	267.79
	Water Duty (M)	1.14	1.37
	Water Productivity (Kg/M <sup>-3</sup> )	0.44	0.38
C	Water Issues (MCM)	324.70	363.70
	Water Duty (M)	1.46	1.62
	Water Productivity (Kg/M <sup>-3</sup> )	0.36	0.34
G	Water Issues (MCM)	93.50	61.80
	Water Duty (M)	2.01	1.15
	Water Productivity (Kg/M <sup>-3</sup> )	0.32	0.57
H	Water Issues (MCM)	308.70	222.90
	Water Duty (M)	1.24	1.16
	Water Productivity (Kg/M <sup>-3</sup> )	0.53	0.55
Huruluwewa	Water Issues (MCM)	60.60	44.98
	Water Duty (M)	0.71	0.57
	Water Productivity (Kg/M <sup>-3</sup> )	0.78	1.31
Udawalawa	Water Issues (MCM)	402.90	362.20
	Water Duty (M)	2.07	1.86
	Water Productivity (Kg/M <sup>-3</sup> )	0.23	0.49

Source: Water Management Secretariat Division, Mahaweli Authority of Sri Lanka



## 2.5 Monthly Actual Rainfall Data in the Irrigation Reservoirs of Mahaweli Areas

Table 2.5: Monthly Rainfall

Project/System	Monthly Rainfall (mm)												
	Jan	Feb	Mar	Apr	May	Jun	Jul	Aug	Sep	Oct	Nov	Dec	Annual
Maduruoya - System B	73	33	1	45	453	68	112	41	4	129	163	446	1,568
Ullithiya - System C	176	43	2	166	88	55	189	22	54	20	340	428	1,583
Elahera - System G	107	39	-	112	126	97	82	20	-	16	352	449	1,399
Kalawewa - System H	18	2	39	174	133	29	72	8	62	28	198	264	1,027
Dambuluoya - System Hu	42	6	16	78	127	79	125	40	73	63	225	488	1,361
Kandalama - System Hu	40	5	10	99	194	92	135	23	51	41	151	487	1,327
Udawalawa	15	4	11	246	179	9	83	45	65	47	292	139	1,134

Source: Water Management Secretariat Division, Mahaweli Authority of Sri Lanka



### 3. Land Development

Table 3.1: Progress of Land Alienation

Activity	Progress of Land Activities up to 2020 (Cumulative - Lots) - (a)										
	B	C	D	G	H	L	HU	UW	E/Vic	Ro	Total
Under LDO (Land Development Ordinance)											
Permits	16,449	56,219	2,107	16,500	40,796	10,245	12,772	59,345	4,938	2,523	221,894
Homestead	12,109		1,347	10,274	25,592	6,172	8,153	36,169	2,941	1,673	140,157
Irrigable	3,578	20,044	705	6,202	15,083	2,107	4,594	17,463		850	70,626
Agro/Rainfed	762	448	55	24	121	1,966	25	5,713	1,997		11,111
Grants	33,557	42,720	1,003	11,793	34,596	5,965	10,222	38,218	4,057	-	182,131
Homestead	19,781	25,483	574	7,119	21,037	4,513	5,636	19,340	2,281		105,764
Irrigable	13,567	16,837	374	4,669	13,554	1,430	4,586	15,156			70,173
Agro/Rainfed	209	400	55	5	5	22		3,722	1,776		6,194
Formally Disposed (Permits not issued)	5,693	3,271	1,715	795	2,790	-	983	16,911	385	-	32,543
Homestead	4,114	1,985	558	159	2,398		983	15,865	385		26,447
Irrigable	1,052	1,017	1,089	631	311			910			5,010
Agro/Rainfed	527	269	68	5	81			136			1,086

Table 3.1: Progress of Land Alienation

Activity	Progress of Land Activities up to 2020 (Cumulative - Lots) - (a)										
	B	C	D	G	H	L	HU	UW	E/Vic	Ro	Total
Under CLO (Crown Land Ordinance)											
Handover the Possession/Tenuer (Annual Permits)	-	3,354	11	698	1,938	161	471	2,699	6,163	16	15,511
Housing		1,335		180	943		100	2,072	4,999	2	9,631
Commercial		1,782	2	495	957	122	341	533	953	4	5,189
Investment Project		151	5	6	8	39	8	68	38	10	333
Religious Places			4	13	30		22	26	44		139
Other		86		4					129		219
Long Term Leases	215	194	8	65	190	38	9	220	203	2	1,144
Housing	1				2				30		33
Commercial	117	175		60	174	37	3	93	150		809
Investment Project	97	15	4	4	10	1	5	114	15	2	267
Religious Places			4	1	4		1	13	8		31
Other		4									4



Table 3.1: Progress of Land Alienation

Activity	Progress of Land Activities up to 2020 (Cumulative - Lots) - (a)										
	B	C	D	G	H	L	HU	UW	E/Vic	Ro	Total
Free Grants	39	30	2	33	165	2	12	237	3,002	-	3,522
Housing		3		15	146			213	2,834		3,211
Religious Places	39	27	2	18	19	2	12	24	27		170
Other									141		141
Government Institutions	75	335	8	79	19	3	11	130	7	13	680
Vesting Orders	75	73		11	14	3		11	5		192
Handing Over		262	8	68	5		11	119	2	13	488
Encroached		48	-	38	955	25	-	2,087	164	2,229	5,546
Housing		2			486			2,027	135	2,229	4,879
Commercial		46		38	432	25		46	28		615
Investment Project					2			14			16
Religious Places					35				1		36

Source: Resident Project Managers' Offices, Mahaweli Authority of Sri Lanka  
(a) Provisional

## 4. Settlement and Population

### 4.1 Settler Families in Mahaweli Areas

Table 4.1: Settler Families in Mahaweli Areas

	System	Families		
		Farmer	Non-Farmer	Total
1	B	20,616	15,994	36,610
2	C	23,780	18,580	42,360
3	D	1,794	524	2,318
4	G	8,736	4,237	12,973
5	H	31,588	42,085	73,673
6	L	5,412	709	6,121
7	Huruluwewa	11,461	14,125	25,586
8	Udawalawa	32,912	44,263	77,175
9	E	18,507	17,314	35,821
10	Rambakenoya	27,122	7,526	34,648
	<b>Total</b>	<b>181,928</b>	<b>165,357</b>	<b>347,285</b>

Source: Resident Project Managers' Offices, Mahaweli Authority of Sri Lanka

### 4.2 Population in Mahaweli Areas

Table 4.2: Population in Mahaweli Areas

	System	Population		
		Male	Female	Total
1	B	56,657	62,282	118,939
2	C	82,050	89,047	171,097
3	D	4,010	4,528	8,538
4	G	23,064	25,896	48,960
5	H	103,444	114,872	218,316
6	L	9,654	11,702	21,356
7	Huruluwewa	52,147	52,949	105,096
8	Udawalawa	139,902	154,823	294,725
9	E	66,696	69,926	136,622
10	Rambakenoya	54,958	54,574	109,532
	<b>Total</b>	<b>592,582</b>	<b>640,599</b>	<b>1,233,181</b>

Source: Resident Project Managers' Offices, Mahaweli Authority of Sri Lanka

### 4.3 Settler Assistance by Mahaweli Areas

Table 4.3: Houses

	System	No. of Houses		
		Permanent	Semi-Permanent	Temporary
1	B	28,103	5,621	923
2	C	31,044	8,797	2,096
3	D	1,228	757	171
4	G	11,228	2,036	150
5	H	48,458	8,103	1,038
6	L	5,374	703	261
7	Huruluwewa	19,360	5,400	634
8	Udawalawa	64,242	10,569	1,886
9	E	29,511	10,503	609
10	Rambakenoya	25,151	2,697	1,610
	<b>Total</b>	<b>263,699</b>	<b>55,186</b>	<b>9,378</b>

Source: Resident Project Managers' Offices, Mahaweli Authority of Sri Lanka

Table 4.4: Latrines

	System	No. of Toilets			
		Water Seal	Not Water Sealed	Direct Pit	Temporary
1	B	17,585	5,456	169	1,677
2	C	33,003	3,418	1,108	417
3	D	729	827	157	103
4	G	12,030	1,873	39	164
5	H	49,401	4,825	394	1,118
6	L	5,211	656	113	168
7	Huruluwewa	16,992	7,060	111	120
8	Udawalawa	68,512	4,421	343	784
9	E	30,985	277	872	102
10	Rambakenoya	25,722	1,002	998	1,869
	<b>Total</b>	<b>260,170</b>	<b>29,815</b>	<b>4,304</b>	<b>6,522</b>

Source: Resident Project Managers' Offices, Mahaweli Authority of Sri Lanka

Table 4.5: Electricity Facilities

	System	Lighting Facility			
		Electricity	Solar	Kerosene	Other
1	B	30,549	41	177	-
2	C	39,727	39	461	-
3	D	1,849	41	150	-
4	G	10,989	6	140	-
5	H	54,631	453	262	8
6	L	6,684	25	142	-
7	Huruluwewa	20,963	10	73	-
8	Udawalawa	68,109	26	362	13
9	E	21,636	139	2,177	-
10	Rambakenoya	28,314	49	393	-
	<b>Total</b>	<b>283,451</b>	<b>829</b>	<b>4,337</b>	<b>21</b>

Source: Resident Project Managers' Offices, Mahaweli Authority of Sri Lanka

Table 4.6: Source of Drinking Water

	System	Wells	Tube Wells	Pipe Borne (No of Houses)	Reverse Osmosis Plant	
					Constructed by MASL	Other Institutions
1	B	4,796	227	11,159	17	41
2	C	8,665	163	25,905	2	36
3	D	860	14	-	-	17
4	G	2,067	176	5,875	-	15
5	H	17,611	559	19,693	4	92
6	L	721	154		12	12
7	Huruluwewa *	6,637	659	16,852	6	34
8	Udawalawa	11,945	615	67,870	4	34
9	E	10,208	25	1,397		
10	Rambakenoya	11,009	909	15,069	-	64
	<b>Total</b>	<b>74,519</b>	<b>3,501</b>	<b>163,820</b>	<b>45</b>	<b>345</b>

\* Small scale domestic RO plants - 526

Source: Resident Project Managers' Offices, Mahaweli Authority of Sri Lanka



## 5. Social and Economic Infrastructure Facilities

### 5.1 Social Infrastructure Facilities

Table 5.1: Social Infrastructure Facilities

	System	Schools	Nursery Schools	Post Offices	Hospitals	Ayurvedic Hospitals	Health Centres
1	B	74	94	21	7	5	25
2	C	93	123	30	5	5	22
3	D	35	6	2	-	-	1
4	G	25	48	15	4	3	12
5	H	84	185	42	10	8	48
6	L	12	22	4	3	-	4
7	Huruluwewa	83	93	21	5	3	8
8	Udawalawa	67	135	29	6	5	57
9	E	75	113	41	7	3	10
10	Rambakenoya	78	95	23	7	5	36
	<b>Total</b>	<b>626</b>	<b>914</b>	<b>228</b>	<b>54</b>	<b>37</b>	<b>223</b>

Source: Resident Project Managers' Offices, Mahaweli Authority of Sri Lanka

### 5.2: Economic Infrastructure Facilities

Table 5.2: Economic Infrastructure Facilities

	System	Cooperatives	Economic Development Centres	Banks
1	B	15	3	21
2	C	12	1	35
3	D	1	-	-
4	G	9	2	15
5	H	17	1	52
6	L	1	-	4
7	Huruluwewa	6	-	25
8	Udawalawa	22	1	47
9	E	9	-	13
10	Rambakenoya	20	-	18
	<b>Total</b>	<b>112</b>	<b>8</b>	<b>230</b>

Source: Resident Project Managers' Offices, Mahaweli Authority of Sri Lanka



Table 5.3: Reservoirs, Anicut, Tanks and Wells

	System	No of Tanks	No of Reservoirs & Anicuts		No of Wells	
					Bore Hall	Agro Wells
1	B	74	1	Maduru Oya	230	128
2	C	56	1	Ulthiya & Rathkinda	36	203
3	D	28			-	104
4	G	15	2	Moragahakanda, Kaluganga	-	222
5	H	127	1	Kalawewa	68	7,045
6	Huruluwewa	13	2	Kanadalama, Dambuluoya	637	6,282
7	L	47	-		65	1,015
8	Rambakenoya	144	3	Loggaloya, Heppolaoya, Diyabannaoya	59	326
9	Udawalawa	124	2	Udawalawa, Chandrikawewa	-	343
10	E/Victoria	26	7	Kotmale, Victoria, Randenigala, Rantambe, Bowatenna, Polgolla, Minipe	-	2,779
	<b>Total</b>	<b>654</b>	<b>19</b>		<b>1,095</b>	<b>18,447</b>

Source: Technical Service Division, Major Dams & Reservoir Operation, Mahaweli Authority of Sri Lanka



Table 5.4: Irrigation Canals by System

	System	Constructed and Maintained by the MASL (km)					Maintained by Other Institutions (km)					Total (km)				
		Main Canal	Branch Canal	D - Canal	Field Canal	Total	Main Canal	Branch Canal	D - Canal	Field Canal	Total	Main Canal	Branch Canal	D - Canal	Field Canal	Total
1	B	77	65	480	1,265	1,887	-	-	23	62	85	77	65	503	1,327	1,972
2	C	29	126	559	1,326	2,039	-	-	-	-	-	29	126	559	1,326	2,039
3	D	8	5	6	5	24	2	-	8	54	64	10	5	14	59	88
4	G	25	5	41	141	211	45	-	136	256	437	70	5	177	397	648
5	H	101	98	625	1,610	2,434	-	-	-	-	-	101	98	625	1,610	2,434
6	L	-	-	24	60	84	-	-	-	-	-	-	-	24	60	84
7	Huruluwewa	111	16	149	346	621	-	-	-	-	-	111	16	149	346	621
8	Udawalawa	89	124	236	843	1,293	-	-	-	-	-	89	124	236	843	1,293
9	E					-					-	-	-	-	-	-
10	Rambakenoya	-	-	-	-	-	55	32	72	246	405	55	32	72	246	405
Total		439	438	2,120	5,597	8,594	102	32	239	618	991	541	470	2,359	6,215	9,585

Source: Resident Project Managers' Offices, Mahaweli Authority of Sri Lanka



Table 5.5: Roads by System

		Constructed by the MASL (Km)						Other Institutions (km)					Total (km)					
System		Class A	Class B	Class C	Class D	MASL*	Total	Class A	Class B	Class C	Class D	Total	Class A	Class B	Class C	Class D	MASL*	Total
1	B	31	23	303	488		846	36	70	1,726	1,669	3,500	67	92	2,029	2,157	-	4,345
2	C							67	125	96	639	927	67	125	96	639	-	927
3	D	-	23	16	38		77		10			10	-	33	16	38	-	87
4	G	-	28	31	87		146	11	14	33	20	78	11	42	64	107	-	224
5	H	31	93	351	302		776	114	49	102	196	461	145	142	453	498	-	1,237
6	L					312	312	-	-	-	-	-	-	-	-	-	312	312
7	Huruluwewa	-	92	159	93		344	19	40	45	98	202	19	132	204	191	-	546
8	Udawalawa						-	31	46	102	595	774	31	46	102	595	-	774
9	E	109	77	19	1		206					-	109	77	19	1	-	206
10	Rambakenoya	-	10	1	22		33	98	147	388	811	1,444	98	157	389	832	-	1,477
	Total	171	346	879	1,031	312	2,738	376	501	2,492	4,027	7,396	547	846	3,371	5,058	312	10,134

Source: Resident Project Managers' Offices, Mahaweli Authority of Sri Lanka

Note: Class A - Managed by the Road Development Authority; Class B - Managed by the Provincial Councils

Class C & D - Managed by the Local Government Authorities

\* Constructed & Maintained by MASL

## 6. Agriculture and Livestock

### 6.1 Cultivation Land Extent in Mahaweli Areas

Table 6.1: Cultivation Land Extent in Mahaweli Areas

System	Asweddumized Extent (Ha) - (a)
B	20,006
C	22,406
D	1,227
G	6,721
H	25,390
Huruluwewa	9,100
L	980
Udawalawe	20,000
Rambaken Oya	905
<b>Total</b>	<b>106,735</b>

Source: Resident Project Managers' Offices, Agriculture Division, Mahaweli Authority of Sri Lanka

(a) - Irrigable Extent

### 6.2 Asweddumized Extent (Irrigated) and Cropping Intensity in Mahaweli Areas

Table 6.2: Asweddumized Extent (Irrigated) and Cropping Intensity in Mahaweli Areas

System	Asweddumized Extent (Ha)	Annual Extent Cultivated (Ha)	Cropping Intensity (%)
B	20,006	39,278	196.3
C	22,406	44,715	199.6
D	1,227	2,666	217.2
G	6,721	9,983	148.5
H	25,390	42,392	167.0
Huruluwewa	9,100	16,423	180.5
L	980	1,383	141.2
Udawalawe	20,000	31,709	158.5
Rambaken Oya	905	1,821	201.2
<b>Mahaweli</b>	<b>106,735</b>	<b>190,371</b>	<b>178.4</b>

Source: Cultivation Report, Agriculture Division, Mahaweli Authority of Sri Lanka

\*System D, RO - A certain area of land under the Department of Agriculture is included in the cultivated extent

## 6.3 Land Extent Cultivated and Production in Mahaweli Areas

Table 6.3: Land Extent Cultivated and Production

Item	Land Cultivation (Ha)			Production (Mt)		
	2019/20 Maha	2020 Yala	Total	2019/20 Maha	2020 Yala	Total
<b>System B</b>	<b>21,063</b>	<b>20,773</b>	<b>44,521</b>	<b>107,197</b>	<b>111,442</b>	<b>233,266</b>
Paddy	20,585	19,931	40,516	102,961	103,891	206,851
OFC	478	842	1,320	4,236	7,551	11,788
Fruits			546			4,088
Other Perennial Crops			2,139			10,539
<b>System C</b>	<b>24,912</b>	<b>23,181</b>	<b>49,462</b>	<b>139,013</b>	<b>130,465</b>	<b>282,927</b>
Paddy	22,598	22,043	44,641	119,262	120,902	240,163
OFC	2,314	1,138	3,452	19,751	9,563	29,314
Fruits			1,079			12,438
Other Perennial Crops			290			1,010
<b>System D</b>	<b>1,725</b>	<b>993</b>	<b>2,852</b>	<b>9,382</b>	<b>5,380</b>	<b>16,096</b>
Paddy	1,520	742	2,262	7,600	3,710	11,310
OFC	205	251	456	1,782	1,670	3,453
Fruits			99			1,158
Other Perennial Crops			35			175
<b>System G</b>	<b>4,761</b>	<b>5,578</b>	<b>10,871</b>	<b>31,299</b>	<b>37,750</b>	<b>72,637</b>
Paddy	4,537	4,634	9,171	28,664	29,227	57,892
OFC	224	945	1,169	2,635	8,522	11,157
Fruits			245			2,881
Other Perennial Crops			287			706
<b>System H</b>	<b>23,226</b>	<b>17,399</b>	<b>44,100</b>	<b>162,678</b>	<b>101,009</b>	<b>300,715</b>
Paddy	22,382	10,616	32,998	154,503	59,171	213,674
OFC	844	6,783	7,628	8,175	41,839	50,013
Fruits			3,180			35,984
Other Perennial Crops			295			1,044

Table 6.3: Land Extent Cultivated and Production

Item	Land Cultivation (Ha)			Production (Mt)		
	2019/20 Maha	2020 Yala	Total	2019/20 Maha	2020 Yala	Total
<b>System Hu</b>	<b>8,478</b>	<b>8,064</b>	<b>16,750</b>	<b>47,386</b>	<b>60,069</b>	<b>109,407</b>
Paddy	8,269	4,667	12,936	44,652	25,669	70,321
OFC	209	3,397	3,606	2,734	34,401	37,135
Fruits			170			1,804
Other Perennial Crops			38			148
<b>System L</b>	<b>3,362</b>	<b>713</b>	<b>4,634</b>	<b>17,918</b>	<b>5,136</b>	<b>28,353</b>
Paddy	2,885	225	3,110	13,907	1,127	15,033
OFC	477	488	965	4,011	4,009	8,020
Fruits			374			4,414
Other Perennial Crops			185			885
<b>Udawalawe</b>	<b>12,857</b>	<b>13,383</b>	<b>36,107</b>	<b>97,594</b>	<b>96,653</b>	<b>308,326</b>
Paddy	10,943	10,756	21,699	75,124	70,790	145,914
OFC	1,914	2,628	4,541	22,469	25,863	48,332
Fruits			7,410			105,160
Other Perennial Crops			2,458			8,919
<b>Rambaken Oya</b>	<b>1,187</b>	<b>1,064</b>	<b>2,536</b>	<b>5,975</b>	<b>4,295</b>	<b>12,119</b>
Paddy	1,059	750	1,809	5,283	3,750	9,033
OFC	128	314	442	692	545	1,237
Fruits			194			1,411
Other Perennial Crops			91			439
<b>System E</b>	<b>-</b>	<b>132</b>	<b>133</b>	<b>-</b>	<b>686</b>	<b>704</b>
Paddy		-	-			-
OFC		132	132		686	686
Fruits			1			16
Other Perennial Crops			0.3			2
<b>Total</b>	<b>101,571</b>	<b>91,281</b>	<b>211,968</b>	<b>618,442</b>	<b>552,885</b>	<b>1,364,548</b>
Paddy	94,778	74,363	169,141	551,956	418,235	970,191
OFC	6,793	16,918	23,711	66,486	134,650	201,135
Fruits			13,298			169,355
Other Perennial Crops			5,818			23,867

Source: Cultivation Report, Agriculture Division - Mahaweli Authority of Sri Lanka



## 6.4 Cultivated Extent, Production and Average Yield of Paddy in Mahaweli Areas

Table 6.4: Cultivated Extent, Production and Average Yield of Paddy

System	2019/2020 Maha			2020 Yala			Total		
	Cultivated (Ha)	Production (Mt)	Average Yield (Mt/Ha)	Cultivated (Ha)	Production (Mt)	Average Yield (Mt/Ha)	Cultivated (Ha)	Production (Mt)	Average Yield (Mt/Ha)
B	20,585	102,961	5.0	19,931	103,891	5.2	40,516	206,851	5.1
C	22,598	119,262	5.3	22,043	120,902	5.5	44,641	240,163	5.4
D	1,520	7,600	5.0	742	3,710	5.0	2,262	11,310	5.0
G	4,537	28,664	6.3	4,634	29,227	6.3	9,171	57,892	6.3
H	22,382	154,503	6.9	10,616	59,171	5.6	32,998	213,674	6.2
Huruluwewa	8,269	44,652	5.4	4,667	25,669	5.5	12,936	70,321	5.5
L	2,885	13,907	5.0	225	1,127	5.0	3,110	15,033	5.0
Udawalawe	10,943	75,124	6.9	10,756	70,790	6.6	21,699	145,914	6.7
Rambaken Oya	1,059	5,283	5.0	750	3,750	5.0	1,809	9,033	5.0
<b>Total</b>	<b>94,778</b>	<b>551,956</b>	<b>5.6</b>	<b>74,363</b>	<b>418,235</b>	<b>5.5</b>	<b>169,141</b>	<b>970,191</b>	<b>5.6</b>

Source: Cultivation Report, Agriculture Division - Mahaweli Authority of Sri Lanka, Department of Census and Statistics

Note: Average yield (Yala & Maha) – Irrigable Average Yield



## 6.5 Paddy Extent and Production in Mahaweli Areas as a Percentage of Sri Lanka

Table 6.5: Paddy Extent and Production in Mahaweli Areas as a Percentage of Sri Lanka

	2020
Extent	16
Production	19

Source: Cultivation Report, Agriculture Division - Mahaweli Authority of Sri Lanka, Annual Report 2020 - Central Bank

## 6.6 Paddy and Rice Availability in Mahaweli Areas

Table 6.6: Paddy and Rice Availability in Mahaweli Areas

Component	2020
Paddy Production Maha (Mt)	551,956
Paddy Production Yala (Mt)	418,235
Total Paddy Production (Mt)	970,191
Wastage = 6%	58,211
Total Extent of Paddy (Ha) Yala+ Maha	169,141
Total Seed Paddy Requirement (Mt)(102.35/1000*Total Extent of Paddy)	17,312
Availability of Paddy for human Consumption (Mt)	894,668
Rice equivalent for human Consumption (Milling ratio =0.68) (Mt)	608,374
Mahaweli Population	1,233,181
Per Capita Rice Availability in Mahaweli Areas (Kg/Year)	493

*Assumption*

Post harvest losses of Paddy is 6%

Seed Paddy requirement 102.35 kg/Ha

Paddy Milling ratio =68%

Source :-Crop forecast Sheet, Department of Agriculture

## 6.7 Extent and Production of Other Field Crops in Mahaweli Areas

Table 6.7: Extent and Production of Other Field Crops

Crop	2019/2020 Maha		2020 Yala		Total	
	Cultivated Extent (Ha)	Production (Mt)	Cultivated Extent (Ha)	Production (Mt)	Cultivated Extent (Ha)	Production (Mt)
Big Onion	2.30	34.00	1,158.45	22,127.50	1,160.75	22,161.50
Black Gram	29.10	29.70	1,348.50	1,995.85	1,377.60	2,025.55
Chilies (Green)	282.92	2,098.86	548.05	4,174.60	830.97	6,273.46
Cowpea	188.65	206.47	722.60	865.61	911.25	1,072.08
Gingelly	58.21	41.45	195.50	131.08	253.71	172.53
Green Gram	89.50	124.26	1,162.15	1,792.59	1,251.65	1,916.85
Ground Nut	326.55	595.98	834.10	1,605.59	1,160.65	2,201.57
Kurakkan	177.35	236.34	182.60	377.16	359.95	613.50
Maize	1,486.79	7,433.95	1,344.20	6,721.00	2,830.99	14,154.95
Red Onion	6.50	78.55	16.12	200.96	22.62	279.51
Soya Bean	64.70	148.75	3,162.80	7,270.21	3,227.50	7,418.96
Manioc	377.12	6,033.92	433.95	6,943.20	811.07	12,977.12
Sweet Potatoes	204.21	3,063.15	474.00	7,110.00	678.21	10,173.15
Kiriala	155.22	2,483.52	104.85	1,677.60	260.07	4,161.12
Innala	21.35	256.20	5.70	68.40	27.05	324.60
Other Yams	19.50	234.00	33.00	396.00	52.50	630.00
Ginger	38.53	231.18	48.70	292.20	87.23	523.38
Tumeric	19.71	98.55	28.95	144.75	48.66	243.30
Vegetable	3,244.67	43,056.85	5,113.93	70,755.40	8,358.60	113,812.25

Source: Cultivation Report, Agriculture Division - Mahaweli Authority of Sri Lanka

## 6.8 Performance of the Other Field Crops by the System B

Table 6.8.1: Extent and Production of Other Field Crops - System B

Crop	2019/2020 Maha		2020 Yala		Total	
	Cultivated Extent (Ha)	Production (Mt)	Cultivated Extent (Ha)	Production (Mt)	Cultivated Extent (Ha)	Production (Mt)
Big Onion	1.20	12.00	3.90	53.00	5.10	65.00
Black Gram	1.60	1.65	20.50	24.85	22.10	26.50
Chilies (Green)	28.70	202.70	61.65	440.60	90.35	643.30
Cowpea	15.35	15.41	69.90	74.22	85.25	89.63
Gingelly	14.10	8.61	2.50	1.50	16.60	10.11
Green Gram	8.90	10.80	59.90	79.32	68.80	90.12
Ground Nut	65.70	113.28	70.65	123.96	136.35	237.24
Kurakkan	7.25	9.90	20.60	29.64	27.85	39.54
Maize	89.70	448.50	66.60	333.00	156.30	781.50
Red Onion	0.05	0.60	2.90	35.90	2.95	36.50
Soya Bean	0.10	0.20			0.10	0.20
Manioc	32.40	518.40	53.85	861.60	86.25	1,380.00
Sweet Potatoes	11.30	169.50	24.65	369.75	35.95	539.25
Kiriala	8.42	134.72	24.20	387.20	32.62	521.92
Innala	2.20	26.40	0.20	2.40	2.40	28.80
Other Yams	2.90	34.80	4.90	58.80	7.80	93.60
Ginger	1.58	9.48	12.60	75.60	14.18	85.08
Tumeric			5.30	26.50	5.30	26.50
Vegetable	186.50	2,519.50	337.15	4,573.60	523.65	7,093.10

Source: Cultivation Report, Agriculture Division - Mahaweli Authority of Sri Lanka

## System C

Table 6.8.2: Extent and Production of Other Field Crops - System C

Crop	2019/2020 Maha		2020 Yala		Total	
	Cultivated Extent (Ha)	Production (Mt)	Cultivated Extent (Ha)	Production (Mt)	Cultivated Extent (Ha)	Production (Mt)
Big Onion			1.60	32.00	1.60	32.00
Black Gram	9.60	9.60	9.60	14.40	19.20	24.00
Chilies (Green)	60.82	426.66	52.00	378.70	112.82	805.36
Cowpea	66.10	66.34	105.00	116.40	171.10	182.74
Gingelly	5.21	3.13	7.50	5.00	12.71	8.13
Green Gram	28.50	34.20	83.50	121.98	112.00	156.18
Ground Nut	61.20	104.04	11.90	21.79	73.10	125.83
Kurakkan	82.00	99.00	9.00	14.40	91.00	113.40
Maize	952.00	4,760.00	329.50	1,647.50	1,281.50	6,407.50
Red Onion	3.40	40.80	5.12	64.66	8.52	105.46
Soya Bean	0.10	0.20	3.00	6.90	3.10	7.10
Manioc	140.42	2,246.72	42.00	672.00	182.42	2,918.72
Sweet Potatoes	51.11	766.65	13.60	204.00	64.71	970.65
Kiriala	110.80	1,772.80	42.10	673.60	152.90	2,446.40
Innala	12.10	145.20			12.10	145.20
Other Yams	11.30	135.60	2.10	25.20	13.40	160.80
Ginger	22.60	135.60	5.50	33.00	28.10	168.60
Tumeric	16.51	82.55	6.70	33.50	23.21	116.05
Vegetable	680.17	8,922.05	408.76	5,498.30	1,088.93	14,420.35

Source: Cultivation Report, Agriculture Division - Mahaweli Authority of Sri Lanka

## System D

Table 6.8.3: Extent and Production of Other Field Crops - System D

Crop	2019/2020 Maha		2020 Yala		Total	
	Cultivated Extent (Ha)	Production (Mt)	Cultivated Extent (Ha)	Production (Mt)	Cultivated Extent (Ha)	Production (Mt)
Big Onion	0.10	2.00	1.30	26.00	1.40	28.00
Black Gram	0.60	0.90	4.60	6.40	5.20	7.30
Chilies (Green)	9.10	72.80	9.80	73.80	18.90	146.60
Cowpea	6.70	8.71	27.20	32.30	33.90	41.01
Gingelly	1.30	1.11	3.30	2.68	4.60	3.79
Green Gram	4.60	8.28	32.10	51.54	36.70	59.82
Ground Nut	45.40	90.80	63.50	121.75	108.90	212.55
Kurakkan	1.70	4.08	1.30	2.76	3.00	6.84
Maize	24.50	122.50	16.60	83.00	41.10	205.50
Soya Bean	4.00	9.20			4.00	9.20
Manioc	12.50	200.00	7.30	116.80	19.80	316.80
Sweet Potatoes	3.80	57.00	4.55	68.25	8.35	125.25
Kiriala	2.90	46.40	2.05	32.80	4.95	79.20
Other Yams	5.30	63.60			5.30	63.60
Ginger	1.10	6.60			1.10	6.60
Vegetable	81.40	1,088.30	77.82	1,052.20	159.22	2,140.50

Source: Cultivation Report, Agriculture Division - Mahaweli Authority of Sri Lanka

## System G (Moragahakanda)

Table 6.8.4: Extent and Production of Other Field Crops - System G

Crop	2019/2020 Maha		2020 Yala		Total	
	Cultivated Extent (Ha)	Production (Mt)	Cultivated Extent (Ha)	Production (Mt)	Cultivated Extent (Ha)	Production (Mt)
Big Onion			119.50	1,607.00	119.50	1,607.00
Black Gram			8.20	11.55	8.20	11.55
Chillies (Green)	8.60	65.20	42.00	301.60	50.60	366.80
Cowpea	0.10	0.13	19.80	23.19	19.90	23.32
Gingelly			2.00	1.58	2.00	1.58
Green Gram			46.10	64.80	46.10	64.80
Ground Nut	12.85	25.34	167.80	327.02	180.65	352.36
Kurakkan	19.60	23.52	1.60	3.12	21.20	26.64
Maize	39.34	196.70	191.10	955.50	230.44	1,152.20
Red Onion	0.35	4.55	1.20	15.10	1.55	19.65
Soya Bean			0.20	0.46	0.20	0.46
Manioc	1.80	28.80	30.00	480.00	31.80	508.80
Sweet Potatoes	28.30	424.50	22.00	330.00	50.30	754.50
Other Yams			11.00	132.00	11.00	132.00
Ginger	1.00	6.00	10.70	64.20	11.70	70.20
Turmeric	0.10	0.50	8.40	42.00	8.50	42.50
Vegetable	112.00	1,859.75	262.90	4,163.20	374.90	6,022.95

Source: Cultivation Report, Agriculture Division - Mahaweli Authority of Sri Lanka



## System H

Table 6.8.5: Extent and Production of Other Field Crops - System H

Crop	2019/2020 Maha		2020 Yala		Total	
	Cultivated Extent (Ha)	Production (Mt)	Cultivated Extent (Ha)	Production (Mt)	Cultivated Extent (Ha)	Production (Mt)
Big Onion	1.00	20.00	202.50	4,050.00	203.50	4,070.00
Black Gram	0.50	0.75	408.00	612.00	408.50	612.75
Chilies (Green)	27.50	220.00	153.30	1,226.40	180.80	1,446.40
Cowpea	3.00	3.90	280.50	364.65	283.50	368.55
Gingelly			25.50	21.68	25.50	21.68
Green Gram	5.00	9.00	186.50	335.70	191.50	344.70
Ground Nut	3.50	7.00	312.50	625.00	316.00	632.00
Kurakkan	6.50	15.60	55.00	132.00	61.50	147.60
Maize	64.50	322.50	422.50	2,112.50	487.00	2,435.00
Red Onion			2.10	27.30	2.10	27.30
Soya Bean	60.50	139.15	2,835.50	6,521.65	2,896.00	6,660.80
Manioc	26.50	424.00	52.70	843.20	79.20	1,267.20
Sweet Potatoes			4.00	60.00	4.00	60.00
Kiriala	15.00	240.00	15.50	248.00	30.50	488.00
Ginger	3.20	19.20	8.00	48.00	11.20	67.20
Turmeric	0.50	2.50	1.00	5.00	1.50	7.50
Vegetable	627.00	6,751.00	1,818.30	24,605.50	2,445.30	31,356.50

Source: Cultivation Report, Agriculture Division - Mahaweli Authority of Sri Lanka

## System Huruluwewa

Table 6.8.6: Extent and Production of Other Field Crops - System HU

Crop	2019/2020 Maha		2020 Yala		Total	
	Cultivated Extent (Ha)	Production (Mt)	Cultivated Extent (Ha)	Production (Mt)	Cultivated Extent (Ha)	Production (Mt)
Big Onion			822.50	16,270.00	822.50	16,270.00
Black Gram			864.70	1,293.05	864.70	1,293.05
Chilies (Green)	1.90	15.20	73.40	579.20	75.30	594.40
Cowpea			47.30	57.89	47.30	57.89
Gingelly			31.20	22.02	31.20	22.02
Green Gram			64.75	116.55	64.75	116.55
Ground Nut			19.45	38.30	19.45	38.30
Kurakkan			33.30	79.92	33.30	79.92
Maize	8.50	42.50	99.30	496.50	107.80	539.00
Soya Bean			321.60	736.08	321.60	736.08
Manioc			3.00	48.00	3.00	48.00
Sweet Potatoes	95.75	1,436.25	377.00	5,655.00	472.75	7,091.25
Kiriata	0.50	8.00	2.00	32.00	2.50	40.00
Innala			1.00	12.00	1.00	12.00
Ginger	3.95	23.70	5.05	30.30	9.00	54.00
Turmeric	0.30	1.50	2.00	10.00	2.30	11.50
Vegetable	98.30	1,206.85	629.30	8,923.80	727.60	10,130.65

Source: Cultivation Report, Agriculture Division - Mahaweli Authority of Sri Lanka



## System L

Table 6.8.7: Extent and Production of Other Field Crops - System L

Crop	2019/2020 Maha		2020 Yala		Total	
	Cultivated Extent (Ha)	Production (Mt)	Cultivated Extent (Ha)	Production (Mt)	Cultivated Extent (Ha)	Production (Mt)
Big Onion			5.35	53.50	5.35	53.50
Black Gram	10.50	10.50	31.20	31.20	41.70	41.70
Chilies (Green)	44.70	312.90	32.50	227.50	77.20	540.40
Cowpea	8.50	8.50	47.00	47.00	55.50	55.50
Gingelly	1.00	0.60	2.90	1.74	3.90	2.34
Green Gram	5.00	6.00	37.50	45.00	42.50	51.00
Ground Nut	38.20	64.94	41.80	71.06	80.00	136.00
Kurakkan	38.80	46.56	8.50	10.20	47.30	56.76
Maize	125.55	627.75	46.00	230.00	171.55	857.75
Red Onion	2.30	27.60	3.20	38.40	5.50	66.00
Soya Bean			2.00	4.00	2.00	4.00
Manioc	7.90	126.40			7.90	126.40
Sweet Potatoes	0.85	12.75			0.85	12.75
Innala	0.75	9.00			0.75	9.00
Other Yams			13.00	156.00	13.00	156.00
Ginger			0.75	4.50	0.75	4.50
Turmeric			0.25	1.25	0.25	1.25
Vegetable	193.35	2,757.75	215.80	3,087.70	409.15	5,845.45

Source: Cultivation Report, Agriculture Division - Mahaweli Authority of Sri Lanka



## System Udawalawe

Table 6.8.8: Extent and Production of Other Field Crops - System UW

Crop	2019/2020 Maha		2020 Yala		Total	
	Cultivated Extent (Ha)	Production (Mt)	Cultivated Extent (Ha)	Production (Mt)	Cultivated Extent (Ha)	Production (Mt)
Big Onion			0.40	8.00	0.40	8.00
Black Gram			1.00	1.50	1.00	1.50
Chilies (Green)	101.60	783.40	119.90	920.30	221.50	1,703.70
Cowpea	63.30	76.95	105.70	124.66	169.00	201.61
Gingelly	36.60	28.01	120.60	74.89	157.20	102.90
Green Gram	37.00	55.38	347.80	604.62	384.80	660.00
Ground Nut	96.70	185.48	128.80	242.45	225.50	427.93
Kurakkan	21.50	37.68	37.80	70.44	59.30	108.12
Maize	108.80	544.00	131.40	657.00	240.20	1,201.00
Red Onion	0.40	5.00	1.60	19.60	2.00	24.60
Manioc	155.60	2,489.60	244.00	3,904.00	399.60	6,393.60
Sweet Potatoes	13.10	196.50	26.80	402.00	39.90	598.50
Kiriala	17.60	281.60	19.00	304.00	36.60	585.60
Innala	6.30	75.60	4.50	54.00	10.80	129.60
Ginger	5.10	30.60	6.10	36.60	11.20	67.20
Turmeric	2.30	11.50	5.30	26.50	7.60	38.00
Vegetable	1,247.65	17,668.05	1,326.80	18,412.30	2,574.45	36,080.35

Source: Cultivation Report, Agriculture Division - Mahaweli Authority of Sri Lanka



## System Rambaken Oya

Table 6.8.9: Extent and Production of Other Field Crops - System RO

Crop	2019/2020 Maha		2020 Yala		Total	
	Cultivated Extent (Ha)	Production (Mt)	Cultivated Extent (Ha)	Production (Mt)	Cultivated Extent (Ha)	Production (Mt)
Big Onion			1.40	28.00	1.40	28.00
Black Gram	6.30	6.30			6.30	6.30
Chilies (Green)			1.00	8.00	1.00	8.00
Cowpea	25.60	26.53	4.00	5.20	29.60	31.73
Green Gram	0.50	0.60	288.00	346.80	288.50	347.40
Ground Nut	3.00	5.10	4.00	8.00	7.00	13.10
Maize	73.90	369.50	3.00	15.00	76.90	384.50
Other Yams			2.00	24.00	2.00	24.00
Vegetable	18.30	283.60	11.00	110.00	29.30	393.60

Source: Cultivation Report, Agriculture Division - Mahaweli Authority of Sri Lanka

## System E

Table 6.8.10: Extent and Production of Other Field Crops - System E

Crop	2019/2020 Maha		2020 Yala		Total	
	Cultivated Extent (Ha)	Production (Mt)	Cultivated Extent (Ha)	Production (Mt)	Cultivated Extent (Ha)	Production (Mt)
Black Gram			0.70	0.90	0.70	0.90
Chilies (Green)			2.50	18.50	2.50	18.50
Cowpea			16.20	20.10	16.20	20.10
Green Gram			16.00	26.28	16.00	26.28
Ground Nut			13.70	26.26	13.70	26.26
Kurakkan			15.50	34.68	15.50	34.68
Maize			38.20	191.00	38.20	191.00
Soya Bean			0.50	1.12	0.50	1.12
Manioc			1.10	17.60	1.10	17.60
Sweet Potatoes			1.40	21.00	1.40	21.00
Vegetable			26.10	328.80	26.10	328.80

Source: Cultivation Report, Agriculture Division - Mahaweli Authority of Sri Lanka

## 6.9 Mahaweli Production and National Production of Selected Crops

Table 6.9: Mahaweli Production, National Production of Selected Crops

Crop	Mahaweli		Sri Lanka		Mahaweli Contribution to National Production	
	Cultivated Extent (Ha)	Production (Mt)	Cultivated Extent (Ha)	Production (Mt)	Cultivated Extent (%)	Production (%)
Big Onion	1,161	22,162	2,305	43,000	50.4	51.5
Black Gram	1,378	2,026	8,812	9,600	15.6	21.1
Chilies	831	6,273	13,580	79,200	6.1	7.9
Cowpea	911	1,072	11,518	13,200	7.9	8.1
Gingelly	254	173	11,654	8,200	2.2	2.1
Green Gram	1,252	1,917	10,889	13,500	11.5	14.2
Ground Nut	1,161	2,202	19,508	38,500	5.9	5.7
Kurakkan	360	614	4,570	6,200	7.9	9.9
Maize	2,831	14,155	78,249	313,500	3.6	4.5
Red Onion	23	280	4,623	65,900	0.5	0.4
Soya Bean	3,228	7,419	3,538	7,900	91.2	93.9
Manioc	811	12,977	20,689	314,846	3.9	4.1

Source: Cultivation Report, Agriculture Division - Mahaweli Authority of Sri Lanka, Central Bank of Sri Lanka

## 6.10 Extent and Production of Fruits in Mahaweli Areas

Table 6.10: Extent and Production of Fruits in Mahaweli Areas

Crop	2020	
	Cultivated Extent (Ha)	Production (Mt)
Banana	8,964.75	134,471.25
Papaw	539.45	9,710.10
Mango	1,767.40	7,405.29
Orange	316.50	3,165.00
Lime	380.70	3,807.00
Graphs	9.70	97.00
Guava	388.00	1,940.00
Pineapple	63.65	636.50
Pomegranate	201.90	2,019.00
Dragon Fruit	30.50	305.00
Melon	90.00	900.00
Passion Fruit	110.50	552.50

Source: Cultivation Report, Agriculture Division - Mahaweli Authority of Sri Lanka

## 6.11 Performance of the Fruits by the System System B

Table 6.11.1: Extent and Production of Fruits - System B

Crop	2020	
	Cultivated Extent (Ha)	Production (Mt)
Banana	58.40	876.00
Papaw	6.90	124.20
Mango	285.70	1,197.86
Orange	23.50	235.00
Lime	65.00	650.00
Graphs	0.10	1.00
Guava	7.50	37.50
Pineapple	3.00	30.00
Pomegranate	70.50	705.00
Melon	0.40	4.00
Passion Fruit	5.00	25.00

Source: Cultivation Report, Agriculture Division - Mahaweli Authority of Sri Lanka

## System C

Table 6.11.2: Extent and Production of Fruits - System C

Crop	2020	
	Cultivated Extent (Ha)	Production (Mt)
Banana	475.90	7,138.50
Papaw	16.60	298.80
Mango	124.90	519.10
Orange	20.70	207.00
Lime	30.40	304.00
Graphs	1.00	10.00
Guava	23.10	115.50
Pineapple	14.40	144.00
Pomegranate	13.20	132.00
Dragon Fruit	2.00	20.00
Melon	10.00	100.00
Passion Fruit	3.70	18.50

Source: Cultivation Report, Agriculture Division - Mahaweli Authority of Sri Lanka

## System D

Table 6.11.3: Extent and Production of Fruits - System D

Crop	2020	
	Cultivated Extent (Ha)	Production (Mt)
Banana	28.65	429.75
Papaw	9.35	168.30
Mango	5.20	21.30
Orange	39.90	399.00
Lime	6.00	60.00
Guava	2.40	12.00
Pineapple	0.30	3.00
Pomegranate	2.20	22.00
Melon	2.40	24.00
Passion Fruit	1.00	5.00

Source: Cultivation Report, Agriculture Division - Mahaweli Authority of Sri Lanka

## System G (Moragahakanda)

Table 6.11.4: Extent and Production of Fruits - System G

Crop	2020	
	Cultivated Extent (Ha)	Production (Mt)
Banana	123.30	1,849.50
Papaw	17.80	320.40
Mango	46.70	196.00
Orange	16.00	160.00
Lime	16.00	160.00
Graphs	0.40	4.00
Guava	11.10	55.50
Pineapple	2.00	20.00
Pomegranate	5.00	50.00
Dragon Fruit	-	-
Melon	3.90	39.00

Source: Cultivation Report, Agriculture Division - Mahaweli Authority of Sri Lanka

## System H

Table 6.11.5: Extent and Production of Fruits - System H

Crop	2020	
	Cultivated Extent (Ha)	Production (Mt)
Banana	1,598.50	23,977.50
Papaw	192.50	3,465.00
Mango	707.60	2,971.78
Orange	152.50	1,525.00
Lime	161.00	1,610.00
Graphs	4.00	40.00
Guava	202.00	1,010.00
Pineapple	9.30	93.00
Pomegranate	70.20	702.00
Dragon Fruit	2.00	20.00
Melon	27.80	278.00
Passion Fruit	46.60	233.00

Source: Cultivation Report, Agriculture Division - Mahaweli Authority of Sri Lanka



## System Huruluwewa

Table 6.11.6: Extent and Production of Fruits - System Hu

Crop	2020	
	Cultivated Extent (Ha)	Production (Mt)
Banana	60.90	913.50
Papaw	10.20	183.60
Mango	32.50	136.25
Orange	5.00	50.00
Lime	17.00	170.00
Graphs	4.00	40.00
Guava	13.50	67.50
Pineapple	0.50	5.00
Pomegranate	5.00	50.00
Dragon Fruit	7.30	73.00
Melon	6.00	60.00
Passion Fruit	6.00	30.00

Source: Cultivation Report, Agriculture Division - Mahaweli Authority of Sri Lanka

## System L

Table 6.11.7: Extent and Production of Fruits - System L

Crop	2020	
	Cultivated Extent (Ha)	Production (Mt)
Banana	82.00	1,230.00
Papaw	126.00	2,268.00
Mango	73.00	306.20
Orange	7.00	70.00
Lime	9.00	90.00
Guava	60.00	300.00
Pineapple	3.00	30.00
Pomegranate	10.00	100.00
Passion Fruit	4.00	20.00

Source: Cultivation Report, Agriculture Division - Mahaweli Authority of Sri Lanka

## System Udawalawe

Table 6.11.8: Extent and Production of Fruits - System UW

Crop	2020	
	Cultivated Extent (Ha)	Production (Mt)
Banana	6,496.20	97,443.00
Papaw	158.80	2,858.40
Mango	373.80	1,561.20
Orange	36.90	369.00
Lime	71.30	713.00
Graphs	0.20	2.00
Guava	58.40	292.00
Pineapple	30.15	301.50
Pomegranate	24.80	248.00
Dragon Fruit	19.20	192.00
Melon	37.10	371.00
Passion Fruit	44.20	221.00

Source: Cultivation Report, Agriculture Division - Mahaweli Authority of Sri Lanka

## System Rambaken Oya

Table 6.11.9: Extent and Production of Fruits - System RO

Crop	2020	
	Cultivated Extent (Ha)	Production (Mt)
Banana	40.20	603.00
Papaw	1.00	18.00
Mango	118.00	495.60
Orange	15.00	150.00
Lime	5.00	50.00
Guava	10.00	50.00
Pineapple	1.00	10.00
Pomegranate	1.00	10.00
Melon	2.40	24.00

Source: Cultivation Report, Agriculture Division - Mahaweli Authority of Sri Lanka

## System E (Victoria)

Table 6.11.10: Extent and Production of Fruits - System E

Crop	2020	
	Cultivated Extent (Ha)	Production (Mt)
Banana	0.70	10.50
Papaw	0.30	5.40

Source: Cultivation Report, Agriculture Division - Mahaweli Authority of Sri Lanka

## 6.12 Extent and Production of Perennial Crops in Mahaweli Areas

### 6.12 Extent and Production of Perennial Crops

Crop	2020	
	Cultivated Extent (Ha)	Production (Mt)
Coconut	4,680.56	23,402.80
Beetle	53.20	53.20
Pepper	418.70	365.70

Source: Cultivation Report, Agriculture Division - Mahaweli Authority of Sri Lanka

## 6.13 Performance of the Perennial Crops by the Systems System B

Table 6.13.1: Extent and Production of Perennial Crops - System B

Crop	2020	
	Cultivated Extent (Ha)	Production (Mt)
Coconut	2,100.00	10,500.00
Beetle	8.40	8.40
Pepper	27.00	27.00

Source: Cultivation Report, Agriculture Division - Mahaweli Authority of Sri Lanka

## System C

Table 6.13.2: Extent and Production of Perennial Crops - System C

Crop	2020	
	Cultivated Extent (Ha)	Production (Mt)
Coconut	194.00	970.00
Beetle	6.30	6.30
Pepper	34.00	34.00

Source: Cultivation Report, Agriculture Division - Mahaweli Authority of Sri Lanka

## System D

Table 6.13.3: Extent and Production of Perennial Crops - System D

Crop	2020	
	Cultivated Extent (Ha)	Production (Mt)
Coconut	35.00	175.00

Source: Cultivation Report, Agriculture Division - Mahaweli Authority of Sri Lanka

## System G (Moragahakanda)

Table 6.13.4: Extent and Production of Perennial Crops - System G

Crop	2020	
	Cultivated Extent (Ha)	Production (Mt)
Coconut	126.30	631.50
Beetle	9.00	9.00
Pepper	65.60	65.50

Source: Cultivation Report, Agriculture Division - Mahaweli Authority of Sri Lanka

## System H

Table 6.13.5: Extent and Production of Perennial Crops - System H

Crop	2020	
	Cultivated Extent (Ha)	Production (Mt)
Coconut	201.50	1,007.50
Beetle	4.50	4.50
Pepper	2.00	2.00

Source: Cultivation Report, Agriculture Division - Mahaweli Authority of Sri Lanka

## System Huruluwewa

Table 6.13.6: Extent and Production of Perennial Crops - System Hu

Crop	2020	
	Cultivated Extent (Ha)	Production (Mt)
Coconut	27.50	137.50
Beetle	3.00	3.00
Pepper	3.00	3.00

Source: Cultivation Report, Agriculture Division - Mahaweli Authority of Sri Lanka

## System L

Table 6.13.7: Extent and Production of Perennial Crops - System L

Crop	2020	
	Cultivated Extent (Ha)	Production (Mt)
Coconut	175.00	875.00
Beetle	5.00	5.00
Pepper	5.00	5.00

Source: Cultivation Report, Agriculture Division - Mahaweli Authority of Sri Lanka

## System Udawalawe

Table 6.13.8: Extent and Production of Perennial Crops - System UW

Crop	2020	
	Cultivated Extent (Ha)	Production (Mt)
Coconut	1,733.96	8,669.80
Beetle	17.00	17.00
Pepper	278.10	225.20

Source: Cultivation Report, Agriculture Division - Mahaweli Authority of Sri Lanka

## System Rambaken Oya

Table 6.13.9: Extent and Production of Perennial Crops - System RO

Crop	2020	
	Cultivated Extent (Ha)	Production (Mt)
Coconut	87.00	435.00
Pepper	4.00	4.00

Source: Cultivation Report, Agriculture Division - Mahaweli Authority of Sri Lanka

## System E (Victoria)

Table 6.13.10: Extent and Production of Perennial Crops - System E

Crop	2020	
	Cultivated Extent (Ha)	Production (Mt)
Coconut	0.30	1.50

Source: Cultivation Report, Agriculture Division - Mahaweli Authority of Sri Lanka



## 6.14 Livestock & Inland Fish Production and Value

Table 6.14: Livestock & Inland Fish Production and Value

Item	Unit	B	C	D	E	G	H	Hu	L	RO	UW	Total
<b>Milk</b>												
Production	Liters Mn	4.0	4.0	2.5	0.4	0.2	7.7	2.7	0.5	2.9	2.6	27.5
Value	Rs.Mn	279.3	279.3	175.7	28.0	14.7	537.6	191.8	31.5	203.0	184.8	1,925.7
<b>Chicken</b>												
Production	Mt'000	6.1	0.6	0.5	0.0	0.2	2.4	0.5	0.0	0.7	0.4	11.3
Value	Rs.Mn	1,878.6	173.6	142.6	0.2	62.0	756.4	166.2	0.3	207.7	111.6	3,499.1
<b>Egg</b>												
Production	Eggs Mn	14.5	2.6	3.1	0.3	0.7	3.1	1.7	0.4	2.7	9.5	38.7
Value	Rs.Mn	261.7	46.8	56.5	5.0	13.3	56.2	30.6	6.3	48.8	171.4	696.6
<b>Mutton</b>												
Production	Mt.	29.5										29.5
Value	Rs.Mn	206.0										206.0
<b>Inland Fish</b>												
Production	Mt'000	1.3	0.3	0.9	0.6	0.0	1.1	0.1	0.0	0.1	1.1	5.5
Value	Rs.Mn	365.2	71.2	257.7	155.1	9.6	301.7	33.8	4.7	23.9	292.6	1,515.5
<b>Prawns</b>												
Production	Mt										11.0	11.0
Value	Rs.Mn.										11.0	11.0
<b>Ornamental Fish</b>												
Production	Mn' Pairs	24.4	0.3	0.3	0.0		1.1	0.7	0.0		0.6	27.3
Value	Rs.Mn	610.3	6.8	6.8	0.1		27.3	17.8	0.1		13.8	682.6
<b>Total</b>	<b>Rs.Mn</b>	<b>3,601.1</b>	<b>577.7</b>	<b>639.2</b>	<b>188.3</b>	<b>99.6</b>	<b>1,679.1</b>	<b>440.1</b>	<b>42.8</b>	<b>483.4</b>	<b>785.1</b>	<b>8,536.6</b>

Source: Livestock Development Division, Mahaweli Authority of Sri Lanka

## 6.15 Mahaweli Contribution to National Production

Table 6.15: Mahaweli Contribution to National Production

<b>Fisheries and Livestock</b>	<b>Mahaweli</b>	<b>National</b>	<b>%</b>
Milk Production (Liters Mn)	27.5	491.5	5.6
Chicken Production (Mt '000)	11.3	216.2	5.2
Egg Production (Eggs Mn)	38.7	1,869.7	2.1
Inland Fish Production (Mt '000)	5.5	102.0	5.4

Source: Central Bank of Sri Lanka





## 7. Investment Projects in Mahaweli Areas

Table 7.1: Investment Projects in Mahaweli Areas

System	No of Investment Projects	Land Alienation (Ha)	Development Status (Ha)				Development Status (No of Lots)			
			100% - 75%	75% - 50%	50% - 25%	25% - 0%	100% - 75%	75% - 50%	50% - 25%	25% - 0%
B	394	3,357	1,751	151	685	770	180	19	47	148
C	148	1,257	707	24	8	517	70	30	18	30
D	13	1,718	883	-	22	813	4	1	-	8
G	8	78	-	3	-	75	4	-	-	4
H	68	161	119	7	-	35	34	4	-	30
L	46	462	-	-	-	462	-	-	-	46
Udawalawe	75	404	288	4	92	20	47	5	14	9
Rambaken Oya	10	95	85	5	-	5	9	-	1	-
E	37	55	25	11	3	16	21	3	7	6
Huruluwewa	10	73	63	10	-	-	6	-	2	2
<b>Total</b>	<b>809</b>	<b>7,659</b>	<b>3,921</b>	<b>214</b>	<b>810</b>	<b>2,714</b>	<b>375</b>	<b>62</b>	<b>89</b>	<b>283</b>

Source: Business Development Division, Mahaweli Authority of Sri Lanka



Table 7.2: Type of Investment Projects in Mahaweli Areas

System	No of Investment Projects										
	Crop Cultivation and Forestry	Livestock	Ornamental fish	Livestock and Agriculture	Tourism	Rice Mill	Garment Factories	Rock Mining Projects	Petrol Station	Power Generation Projects	Other
B	233	14	26	16	4	58	2	1	5	-	35
C	24	-	2	-	-	82	2	9	4	2	23
D	9	2	-	-	-	-	-	-	1	-	1
E	2	-	-	-	3	-	2	-	-	5	25
G	-	-	-	-	3	1	2	-	2	-	-
H	7	-	1	-	2	14	5	-	-	-	39
L	10	-	-	32	-	-	-	-	-	-	4
Rambaken Oya	7	1	-	-	-	-	1	-	-	-	1
Huruluwewa	2	-	-	-	1	5	1	-	1	-	-
Udawalawa	16	3	2	3	3	-	5	-	-	7	36
<b>Total</b>	<b>310</b>	<b>20</b>	<b>31</b>	<b>51</b>	<b>16</b>	<b>160</b>	<b>20</b>	<b>10</b>	<b>13</b>	<b>14</b>	<b>164</b>
											<b>809</b>

Source: Business Development Division, Mahaweli Authority of Sri Lanka

## 8. Information Related to Social Empowerment

### 8.1 Farmer organization in Mahaweli Areas

Table 8.1: Farmer Organization and Members

System	Farmer Organization		Commercialized Farmer Organization	
	No Farmer Organization	No of Members	No of Commercialized Farmer Organization	No of Members
B	134	20,860	-	-
C	200	22,891	1	175
D	23	2,489	-	-
G	57	7,273	-	-
H	225	26,771	1	13
Huruluwewa	82	7,097		
L	33	4,622	-	-
Rambaken Oya	14	1,051	-	-
Udawalawe	299	25,375	1	92
<b>Total</b>	<b>1,067</b>	<b>118,429</b>	<b>3</b>	<b>280</b>

Source: Institutional Development Division, Mahaweli Authority of Sri Lanka

### 8.2 Women's Small Group in Mahaweli Areas

Table 8.2: Women's Small Group in Mahaweli Areas

System	Women's Small Group	
	No of Women's Small Group	No of Members
B	114	2,668
C	72	896
D	41	422
G	77	589
H	89	1,007
Huruluwewa	65	588
L	63	285
Rambaken Oya	84	2,978
Udawalawe	17	395
E	73	3,620
<b>Total</b>	<b>695</b>	<b>13,448</b>

Source: Resident Project Managers' Offices, Mahaweli Authority of Sri Lanka

## 8.3 Samurdhi Beneficiaries in Mahaweli Areas

Table 8.3: Samurdhi Beneficiaries

System	No. of Samurdhi Beneficiaries
B	10,146
C	7,288
D	831
E	11,559
G	4,460
H	10,094
Huruluwewa	7,344
L	3,595
Rambaken Oya	12,150
Udawalawe	22,738
<b>Total</b>	<b>90,205</b>

Source: Resident Project Managers' Offices, Mahaweli Authority of Sri Lanka

## 8.4 Kidney Patients in Mahaweli Areas

Table 8.4: Kidney Patients

System	Kidney Disease	
	No of Patients	Number of Governments Assisted Patients
B	1,017	631
C	2,426	1,892
D	194	112
G	782	477
H	1,868	1,001
Huruluwewa	884	684
L	817	238
Rambaken Oya	1,135	991
Udawalawe	283	105
E	1,522	1,522
<b>Total</b>	<b>10,928</b>	<b>7,653</b>

Source: Resident Project Managers' Offices, Mahaweli Authority of Sri Lanka

## 9. Environment

### 9.1 Elephant Fences in Mahaweli Areas

#### 9.1 Elephant Fences in Mahaweli Areas

System	Distance of Elephant Fence			
	Electric Fence		Live Fence	
	Constructed (Km)	To be constructed (Km)	Constructed (Km)	To be constructed (Km)
B	223.30	41.80	4.50	31.00
C	156.80	-	0.50	1.00
D	48.00	26.00		
G	188.00	-	11.00	167.00
H	262.55	21.00	1.00	3.00
Huruluwewa	61.50	58.50	6.00	7.00
L	93.00	40.50		
Rambaken Oya	10.00	To be measured		
Udawalawe	179.00	26.00	8.00	4.00
<b>Total</b>	<b>1,222.15</b>	<b>213.80</b>	<b>31.00</b>	<b>213.00</b>

Source: Resident Project Managers' Offices, Mahaweli Authority of Sri Lanka

## 10. Investment

### 10.1 Annual Budget and Expenditure - Mahaweli Authority of Sri Lanka

Table 10.1: Annual Budget and Expenditure

Year	Capital		Recurrent		Total Budget (Rs. Mn)	Total Expenditure (Rs. Mn)
	Budget (Rs.Mn)	Expenditure (Rs. Mn)	Budget (Rs.Mn)	Expenditure (Rs. Mn)		
2000	2,842	1,772	844	815	3,686	2,587
2001	4,114	2,352	773	882	4,886	3,233
2002	3,139	3,006	833	917	3,972	3,922
2003	3,307	3,044	805	838	4,112	3,882
2004	2,777	1,986	889	889	3,666	2,875
2005	2,852	2,606	1,164	1,136	4,016	3,743
2006	3,330	2,864	1,343	1,354	4,673	4,218
2007	3,582	3,249	1,532	1,566	5,115	4,815
2008	4,930	3,545	1,727	1,726	6,656	5,271
2009	5,309	2,193	1,836	1,824	7,144	4,017
2010	4,409	2,934	1,925	1,903	6,334	4,837
2011	7,025	3,766	1,950	1,977	8,975	5,743
2012	2,050	1,486	1,950	1,937	4,000	3,423
2013	1,950	1,879	2,150	1,950	4,100	3,972
2014	2,225	2,207	2,295	2,335	4,520	4,542
2015	2,400	2,216	2,427	2,919	4,827	5,135
2016	3,775	3,262	3,096	2,994	6,871	6,256
2017	3,385	2,761	3,163	2,971	6,548	5,732
2018	2,734	2,609	3,510	3,056	6,244	5,665
2019	2,310	1,987	3,781	3,319	6,091	5,305
2020	1,676	1,487	3,914	3,624	5,590	5,111

Source: Socio Economics Statistics - 2018 and Expenditure Statement , Mahaweli Authority of Sri Lanka

# 11. Project Benefits and Cost

Table 11.1: Project Benefits and Cost

Year	At Current Prices					At Constant Prices (2002 = 100 & 2006/07=100** & 2013 = 100 (NCPI)					% Share						
	Benefit Cost Ratio (Value of Benefit Per Unit Cost)	Project Cost (Rs.Mn)	Gross Value * (Rs.Mn)			Benefit Cost Ratio (Value of Benefit Per Unit Cost)	Project Cost (Rs.Mn)	Real Value * (Rs.Mn)									
			Total	Paddy	OFC			Livestock & Inland Fish	Power	Total	Paddy	OFC	Livestock & Inland Fish	Power	Crops	Livestock & Inland Fish	Hydro Power
Cumulative Total																	
Up to 2001		75,504	194,693	68,090	29,910	1,406	95,287										
2002	6.42	3,006	19,307	8,180	2,430	265	8,432	6.42	3,006	8,180	2,430	265	8,432	55.0	1.4	43.7	
2003	7.56	3,044	23,008	7,612	4,133	296	10,967	7.56	2,872	7,182	3,899	279	10,346	51.0	1.3	47.7	
2004	11.88	1,986	23,597	10,452	4,738	380	8,027	10.42	1,742	9,168	4,156	333	7,041	64.4	1.6	34.0	
2005	9.89	2,606	25,763	10,409	5,150	513	9,691	9.88	2,041	8,151	4,033	401	7,589	60.4	2.0	37.6	
2006	13.10	2,864	37,529	10,871	6,600	972	19,086	13.11	1,972	7,487	4,545	670	13,144	46.6	2.6	50.9	
2007	13.14	3,249	43,945	14,130	9,574	1,857	18,384	13.52	2,098	9,123	6,181	1,199	11,869	54.4	4.2	41.8	
2008	17.52	3,545	62,106	26,667	12,523	2,428	20,488	18.00	1,773	13,338	6,264	1,214	10,248	63.1	3.9	33.0	
2009	23.59	2,193	51,736	21,761	11,873	1,884	16,218	23.61	1,060	10,528	5,744	911	7,846	65.0	3.6	31.3	
2010	28.17	2,934	82,655	29,227	18,801	2,781	31,846	28.17	1,339	13,340	8,581	1,269	14,535	58.1	3.4	38.5	
2011	19.24	3,766	72,523	22,428	21,161	3,220	25,714	19.25	2,486	14,804	13,968	2,125	16,973	60.1	4.4	35.5	
2012	40.76	1,486	60,828	24,109	15,504	4,176	17,039	40.93	912	14,800	9,517	2,564	10,460	65.1	6.9	28.0	
2013	54.58	1,879	103,368	26,659	18,462	5,046	53,201	55.00	1,079	15,303	10,598	2,897	30,540	43.7	4.9	51.5	

Table 11.1: Project Benefits and Cost

Year	At Current Prices					At Constant Prices (2002 = 100 & 2006/07=100)** & 2013 = 100 (NCPI)					% Share						
	Benefit Cost Ratio (Value of Benefit Per Unit Cost)	Project Cost (Rs./Mn)	Gross Value * (Rs./Mn)				Benefit Cost Ratio (Value of Benefit Per Unit Cost)	Project Cost (Rs./Mn)	Real Value * (Rs./Mn)								
			Total	Paddy	OFC	Livestock & Inland Fish			Power	Total	Paddy	OFC	Livestock & Inland Fish	Power	Crops	Livestock & Inland Fish	Hydro Power
2014	41.36	2,207	92,601	30,152	27,030	6,095	29,324	41.96	2,092	87,773	28,580	25,621	5,777	27,795	61.8	6.6	31.7
2015	55.24	2,216	122,418	47,971	19,875	11,139	43,433	55.24	2,024	111,797	43,809	18,150	10,173	39,665	55.4	9.1	35.5
2016	28.62	3,262	93,372	31,890	21,531	13,037	26,914	28.62	2,866	82,049	28,023	18,920	11,456	23,651	57.2	14.0	28.8
2017	31.66	2,761	87,419	24,838	30,813	13,211	18,558	31.66	2,252	71,304	20,259	25,133	10,775	15,137	63.7	15.1	21.2
2018	46.29	2,609	120,763	44,460	22,063	12,774	41,467	46.29	2,084	96,456	35,511	17,622	10,203	33,120	55.1	10.6	34.3
2019	53.27	1,987	105,843	43,154	25,979	9,651	27,058	53.27	1,533	81,669	33,298	20,046	7,447	20,878	65.3	9.1	25.6
2020	80.77	1,487	120,128	50,120	31,692	8,537	29,779	80.77	1,081	87,302	36,424	23,032	6,204	21,642	68.1	7.1	24.8
Total	12.39	124,592	1,543,601	553,179	339,841	99,667	550,913	27.34	36,312	992,821	357,308	228,440	76,162	330,911			

Source: Progress Report, Mahaweli Authority of Sri Lanka and Annual Report, Central Bank of Sri Lanka

*Note:*

**\*\*The Colombo Consumers' Price Index (New) (CCP - (N)) which is the official price index used for monitoring Inflation in the Country is based for calculation constant prices**

\*\*\*National Consumers' Price Index (NCPI) which is the official price index used for monitoring Inflation in the Country is based for calculation constant prices from 2014 to 2020

*Annual average price changes of NCPI are,*

2014	2015	2016	2017	2018	2019	2020
105.5	109.5	113.8	122.6	125.2	129.6	137.6



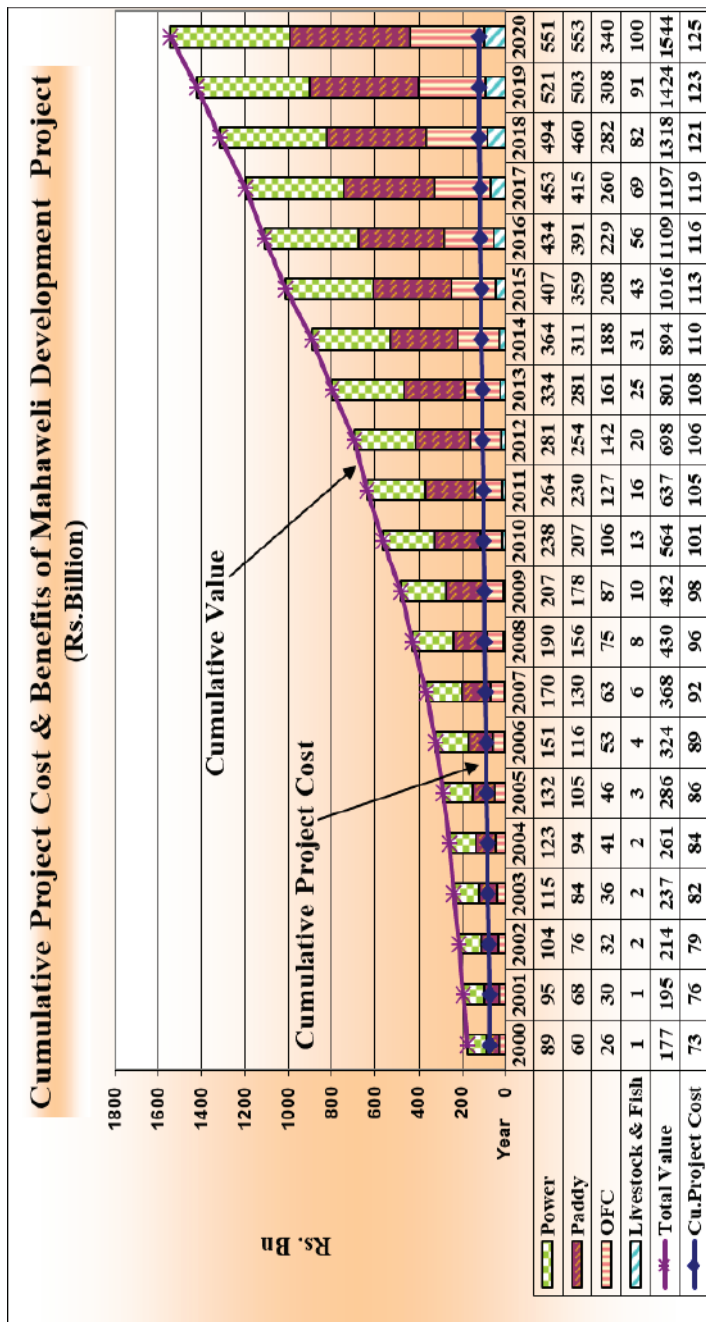


Figure 11.1 : Cumulative Project Cost and Benefits of Mahaweli Development Project (Rs. Bn)

## 12. Local Funded Projects Implemented by Mahaweli Authority of Sri Lanka

Table 12.1: Local Funded Projects

	Project / Programme	Project Scope	Location	TEC (Rs.Mn)	Project Period	Cumulative Expenditure (Rs.Mn) 2020,12,31
1	Mahaweli Consolidation Project	To Increasing income levels of rural communities settled in the Maduru Oya Left Bank area assuring irrigation water supply for their agriculture.	Pollonnaruwa & Batticaloa District	4,910.00	2007- 2021	4,555.55
2	Redeemaliyadda Integrated Development Project	To development Rideemaliyadda Divisional Secretary's Division area by the Mahaweli Authority. Main objectives of this project are to develop infrastructure facilities and to open up agriculture-based production and sustainable income avenues for the families in the area	Badulla District - Rideemaliyadda DS Division	1,100.00	2012- 2022	699.13
3	Welioya Integrated Development Project	Project is aimed to provide homestead, irrigated lands and necessary physical and social economic infrastructure for 6,788 displaced families.	Anuradhapura, Vavuniya, Mullaitivu	3,957.10	2012- 2023	2,288.75

Table 12.1: Local Funded Projects

	Project / Programme	Project Scope	Location	TEC (Rs.Mn)	Project Period	Cumulative Expenditure (Rs.Mn) 2020.12.31
4	Dambadeniya Integrated Development project	Implemented within the Ampara District covering Mahanoy and Padiyathalawa DS Division focusing of reservoir and irrigation development in the area. Main objectives of the project are (a) Rehabilitation of small and medium tanks and anicut (b) Rehabilitation of 70 km of village roads (c) Increased agriculture production of the project area by 50% (d) Provision of Drinking water through construction of wells and (e) Sanitary healthcare improvement programme	Ampara District - Mahaoya/Padiyathalawa DS Division	1,086.00	2012- 2023	487.38

Table 12.1: Local Funded Projects

	Project / Programme	Project Scope	Location	TEC (Rs.Mn)	Project Period	Cumulative Expenditure (Rs.Mn) 2020.12.31
5	Mahaweli Agriculture and Livestock Programme	Initiated to entire enhancement of local food crop cultivation and livestock production which will lead to reduce agricultural imports to the country thus establishing country's food security in line with National Food Production Programme.	All Mahaweli systems	138.10	Annual	112.98
6	System B Maduru Oya RB Development	Proposed to develop 859 homesteads and 859 irrigated land plots within the area of Mahawelithanna and Malwenna Units in Singhapura Block. (a) Resettle 859 displaced families in Singhapura block and reestablishment of the settlements (b) Develop 521 ha of existing underutilize lands for irrigated agriculture purpose and 174 ha of homesteads (c) Construction of Mahawelithenna Tank and related irrigation channels.	Pollonnaruwa & Batticaloa (Koralepaththu North, Welikanda)	935.49	2014- 2020	707.92



Table 12.1: Local Funded Projects

	Project / Programme	Project Scope	Location	TEC (Rs.Mn)	Project Period	Cumulative Expenditure (Rs.Mn) 2020.12.31
7	Rehabilitation of Major and Medium irrigation Schemes Including emergency infrastructure rehabilitation Works	The project focuses for (a) Repair and maintenance of major head works and reservoirs, (b) Rehabilitation of irrigation infrastructure and (c) Construction and rehabilitation of roads along the irrigation distribution channels in Mahaweli Systems B, C, H, L, Huruluwewa, Udawalawa and EIC units under Head works and Maintenance Division of MASL	North, North Central, Eastern, Southern, Uva provinces	825.00	2015-2020	704.39

Source: Progress Reports, Mahaweli Authority of Sri Lanka

## Blocks and Units in Mahaweli Areas

System	Serial No (Block Wise)	Block	Serial No (Unit Wise)	Unit
<b>B</b>	1	Damminna	1	Kandegama/Deewara gammanaya
			2	Damminna/ Pubudugama
			3	Nidanwala/ Ihala wewa
			4	Aluth oya
			5	Arunapura/ Diwuldamana
	2	Wijayabapura	6	503 unit/Maduruthenna
			7	Aralaganwila
			8	Pimbureththewa
			9	Dewagama/ Bamunakotuwa
			10	Galthalawa/ Madagama
	3	Allewewa	11	Mahadamana/ Phala Allewewa
			12	Allewewa/ Kalukele
			13	Pelatiyawa/Magul damana
			14	Ihala Elle wewa/Badanagala
	4	Dimbulagala	15	Dimbulagala/Millana
			16	Mahaulpatha /Bimpokuna
			17	Bagaswewa/ Weheragama
			18	Kudawewa/ Dalukana
			19	Manampitiya
			20	Weerana

## Block and Units

System	Serial No (Block Wise)	Block	Serial No (Unit Wise)	Unit
<b>B</b>	5	Sewanapitiya	21	Borawewa/ Minikwela
			22	Muthugala/ Karapola
			23	Malinda/ Maduranagala
			24	Ginidamana/ Aluthwela
			25	Ridipokuna/Nelumwewa
			26	Sewanapitiya
			27	Mahawewa
	6	Aselapura	28	Manikdeniya/Mahindagama
			29	Aselapura/Ruwanpitiya
			30	Namalgama/ Kalingawila
			31	Ridithenna/Jayanthiyaya
			32	Kurulubedda/ Mahasenpura
			33	Nagasthenna/ Mithrigama
			34	Randenawala/ Sandunwila
			35	Ransarathenna
	7	Sighapura	36	Dimbulana/ Parakumyaya
			37	Kudapokuna/ Muthuwella
			38	Sinhapura/Kandakaduwa
			39	Mahawelithenna
			40	Sooriyawewa
			41	Malwenna
	8	Senapura	42	Sandunpitiya/ Athugala/Malwila
			43	Monarathenna/Ruhunaketha
			44	Magulpokuna/Welikanda
			45	Senapura
			46	Katuwanwila
			47	Susirigama
			48	Boaththa

## Block and Units

System	Serial No (Block Wise)	Block	Serial No (Unit Wise)	Unit
C	1	Giradurukotte	1	Hobariyawa
			2	Ginnoruwa
			3	Ulhitiya
			4	Millaththewa
			5	Galporuyaya
			6	Rotalawela
			7	Giradurukotte
	2	Nawa Medagama	8	Diyawiddagama
			9	Henanigala
			10	Nawa Medagama
	3	Sandunpura	11	Muwagammana
			12	Sandamadulla
			13	Lathapadura
			14	Bakmeedeniya
			15	Lihiniyagama
			16	Sandunpura
	4	Siripura	17	Paragaswewa
			18	Chandanagama
			19	Paludeniya
			20	Mudungama
	5	Nuwaragala	21	Nuwaragala
			22	Pihitiwewa
			23	Pallegama
	6	Mahanawela	24	Kudagala
			25	Sooriyapokuna
			26	Mahanawela
	7	Weheragala	27	Ulapathwewa
			28	Maldeniya
			29	Weeralanda
			30	Weheragala
			31	Kajuwaththa



## Block and Units

System	Serial No (Block Wise)	Block	Serial No (Unit Wise)	Unit
<b>D</b>	1	Bisopura	1	Bisopura
			2	Dahamwewa
			3	Nabadawewa
			4	Bandarawewa
	2	Sooriyapura	5	Sooriyapura
			6	Samagipura
<b>G</b>	1	Bakamuna	1	Siyambalawa
			2	Galmulla
			3	Sirikanduyaya
			4	Gangeyaya
			5	Nikapitiya
			6	Segala
	2	Aththanakadawala	7	Aththanakadawala
			8	Madudamana
			9	Diggalpitiya
			10	Jayasiripura
			11	Ihakuluwewa
	3	Wellewela	12	Wellewela (Leloya)
			13	Thorapitiya (Kotamapaya)
			14	Maoya
	4	Guruwela	15	Nawa laggala
			16	Guruwela
			17	Heeratioya

## Block and Units

System	Serial No (Block Wise)	Block	Serial No (Unit Wise)	Unit
<b>H</b>	1	Mahailupplama	1	Mahailupplama
			2	Kagama
			3	Palugaswewa
			4	Katiyawa
	2	Galnewa	5	Aukana
			6	Bulnewa
			7	Kalankuttiya
			8	Hurigaswewa
	3	Nochchiyagama	9	417
			10	418
			11	417 Town
			12	413/414
			13	412/415
	4	Eppawala	14	401
			15	402
			16	403
			17	407
	5	Thambuththegama	18	Thabuththegama Town
			19	404
			20	405
			21	406/408
	6	Thalawa	22	409/410
			23	411/419
			24	420/421
	7	Meegalewa	25	Bongama
			26	Meegalewa

## Block and Units

System	Serial No (Block Wise)	Block	Serial No (Unit Wise)	Unit
HU	1	Madatugama	1	Madatugama
			2	Elagamuwa
			3	Thibbatuwewa
	2	Galkiriyagama	4	Dambuluhalmillewa
			5	Pubbogama
			6	Galkiriyagama
	3	Palugaswewa	7	Palugaswewa
			8	Yakalla
			9	Halmillewa
	4	Sigiriya	10	Sigiriya
			11	Mahasanagama
	5	Kalundewa	12	Kalundewa
			13	Walagampaya
L	1	Ethawetunawewa	1	Ethawetunawewa
			2	Gajabapura
			3	Nikawewa Left
			4	Nikawewa Right
			5	Monarawewa
			6	Kalyanipura
	2	Kiriibbanwewa	7	Ehatugaswewa
			8	Kiriibbanwewa
			9	Janakapura
			10	Helambawewa
	3	Weherathenna	11	Weherathenna
			12	Bogaswewa 1
			13	Nandimithragama
			14	Bogaswewa 2
			15	Salalihinigama
			16	Namalgama

## Block and Units

System	Serial No (Block Wise)	Block	Serial No (Unit Wise)	Unit
UW	1	Chandrika wewa	1	Udawalawa
			2	Gage yaya
			3	Ketagalaara
			4	New Town
			5	Mahapelessa
			6	Moraketiya
			7	Halmillaketiya
			8	Kuttigala
	2	Murawesihena	9	Yaya ata
			10	Barawakumbuka
			11	Murawesihena
			12	Deniya
			13	Binkama
			14	Uswewa
	3	Agunakolapelessa	15	Guruwala
			16	Gajamangama
			17	Kattakaduwa
			18	Gotaimbaragama
	4	Kiriebbanwewa	19	Habaraluwewa
			20	Kiriebbanwewa
			21	Haburugala
			22	Mahagama
	5	Suriyawewa	23	Suriyawewa
			24	Suriyawewa Town
			25	Beddewewa
			26	Viharagala
			27	Alioluaara
			28	Bediganthota

## Block and Units

System	Serial No (Block Wise)	Block	Serial No (Unit Wise)	Unit
UW	6	Maurapura	29	Namadagaswewa
			30	Andarawewa
			31	Thelavilla
			32	Ruhunupura
			33	Karuwalawewa
			34	Bolhinda
			35	Galwewa
			36	Bellagaswewa
			37	Ranamaurapura
			38	Katuwewa
			39	Thissapura (Thissapura/Samarakoonwewa)
RO	1	Rideemaliyadda	1	Dehigama
			2	Dikyaya
			3	Rideemaliyadda
			4	Kuruvithanna
			5	Uvatissapura
			6	Kuda Lunuka
			7	Keselpotha
			8	Arawatta
	2	Pollabedda	9	Mahaoya
			10	Bogamuyaya
			11	Samagipura
			12	Borapola
			13	Pollebadda
			14	Nilomba
			15	Iddapola
	3	Padiyathalawa	16	Padiyathalawa
			17	Saranagama
			18	Galoday
			19	Serankada
			20	Kolamanthalawa

## Block and Units

System	Serial No (Block Wise)	Block	Serial No (Unit Wise)	Unit
E	1	Menipe	1	Hadaganawa
			2	Hasalaka
			3	Mahayaya
			4	Ulpathagama
			5	Dahimigama
	2	Wilgamuwa	6	Sonuththara
			7	Hettipola
			8	Dewagiriya
			9	Maraka
			10	Lediyagala
	3	Digana	11	Teldeniya
			12	Digana
			13	Polgolla
			14	Balagolla
	4	Kothmale	15	Doragala Unit
			16	Thispane Unit
			17	Halgolla Unit

## Other Information

### Mahaweli Farms

	System	Farms	Extent (Ha.)
1	B	Mahaweli Seed Production Farm - Agalaganvilla	208.9
2	C	Mahaweli Seed Production Farm - Rathkida	372.0
3	D	Mahaweli Animal Husbandry Farm - Bisopura	15.7
4	G	Mahaweli Seed Production Farm – Aththanakadawala *	5.2
5		Mahaweli Horticulture Farm -Guruwela	40.0
6	H	Mahaweli Animal Husbandry Farm – Niraviya **	146.6
7		Mahaweli Animal Husbandry Farm - Kalankuttiya	6.4
8	L	Mahaweli Seed Production Farm - Sampathnuwara	9.5
9	RO	Mahaweli Animal Husbandry Farm - Sampathnuwara	3.1
10		Mahaweli Horticulture Farm - Galwalayaya	22.8
11	UW	Mahaweli Seed Production Farm - Kachchigalara	16.4
12		Mahaweli Seed Production Farm - Gurugodella	13.0
13		Mahaweli Seed Production Farm - Kattakaduwa	7.4
14		Mahaweli Seed Production Farm - Kendaketiya Maha	21.0
15		Mahaweli Seed Production Farm - Suriyawewa	2.7
16		Mahaweli Horticulture Farm - Murawesihena	20.3
17		Mahaweli Animal Husbandry Farm -Mahagama	32.1
Total			943.2

Source: Agriculture Division - Mahaweli Authority of Sri Lanka

\* 2.898 ha land has been given to Goopi Food (PVT) Ltd. for seasonal cultivation and 1.758 ha has been granted for Wayamba Channel Development Project.

\*\* 60.4 ha land has been allocated for SL Army and 10 ha has been given for cultivation under lease condition .

## Mahaweli Nurseries

	System	Nurseries	Extent (Ha)
1	B	Aralaganwila Central Plant Nursery	1.5
2		Welikanda	1.0
3	C	Dehiattakandiya	1.5
4		Giradurukotte	1.0
5	D	Bisopura	1.0
6	G	Bakamuna	0.5
7	H	Thelhiriyawa	1.0
8	Hu	Pelwehara	0.5
9	L	Sampathnuwara	1.0
10	RO	Plollebadda	1.0
11	UW	Ambilipitiya Plant Nursery	1.5
12	F &E - Kothmale	Nawadavita	2.0
13		Pallekale	2.0
Total			15.5

Source: Forest and Environment Division - Mahaweli Authority of Sri Lanka



## Mahaweli Circuits

No	System	Name
1	B	Ruhunuketha
2		Pimburaththawa
3		MRTC
4		Polkote
5		MARD
6	C	Mahaweli Mansala
7		Girandurukotte
8		Ulhitiya Rathkinda I/II
9		Dehiaththakandiya II/III
10	G	Bakamuna
11		Moaragahakanda Dam Circuit
12	D	Mahaweli Viyamana
13		Kanthale (Suriyapura)
14	H	Nochchiyagama
15		Niraviya
16		Thambuttegama
17		Kalawawa
18		Thelhiriyagama
19	L	Welioya
20	E	Nuawaraeliya
21		Digana
22		Buwalikada
23		Kothamale 22/23/24
24	Udawalawe	Embilipitiya
25		Udawalawa
26		Mayurapura
27	Rambakenoya	Badulla
28		Mahaoya
29	MDRO	Polgolla
30		Kothmale 119
31		Randenigala VIP
32		Bowathanna
33		Maduruoya

Source: Business Development Division - Mahaweli Authority of Sri Lanka

MDRO – Major Dams & Reservoirs Operation

MRTC, Polkotte, MARD, Kanthale, Mayurapura Circuits – Not Functional

## Mahaweli Buildings

	System / Division	Office Buildings	Quarters	Stores
1	MDRO	36	547	16
2	F & E	4	45	3
3	Huruluwewa	13	71	32
4	Mahaweli Centre	2	-	-
5	MCP B	-	-	-
6	Moragahakanda (System G)	17	89	15
7	System H with Nirawiya Farm	27	366	25
8	RBM - Madatugama	2	-	-
9	System B	92	610	98
10	Rambakenoya	6	10	5
11	Work Shop - Thabutteagama	-	1	4
12	System D	-	-	1
13	System C	104	950	140
14	Victoria	5	98	2
15	Walawa	67	409	29
16	Mahaweli Security Corp	2	21	0
17	System L	1	42	10
	<b>Total</b>	<b>378</b>	<b>3,259</b>	<b>380</b>

Source: Finance Division , Mahaweli Authority of Sri Lanka

MDRO – Major Dams & Reservoirs Operation

RBM - River Basin Management

F&E - Forest and Environment

## Mahaweli Employees

Salary Code	Employees	Approved Cadre	Existing Staff			
			Permanent	Secondment	Contract	Total
HM	Senior Level	34	16	2	1	19
MM, JM	Tertiary Level	808	637	3	1	641
MA	Secondary Level	1,873	1,604			1,604
PL	Primary Level	2,144	2,013		3	2,016
	<b>Total</b>	<b>4,859</b>	<b>4,270</b>	<b>5</b>	<b>5</b>	<b>4,280</b>

Source: Finance Division, Mahaweli Authority of Sri Lanka

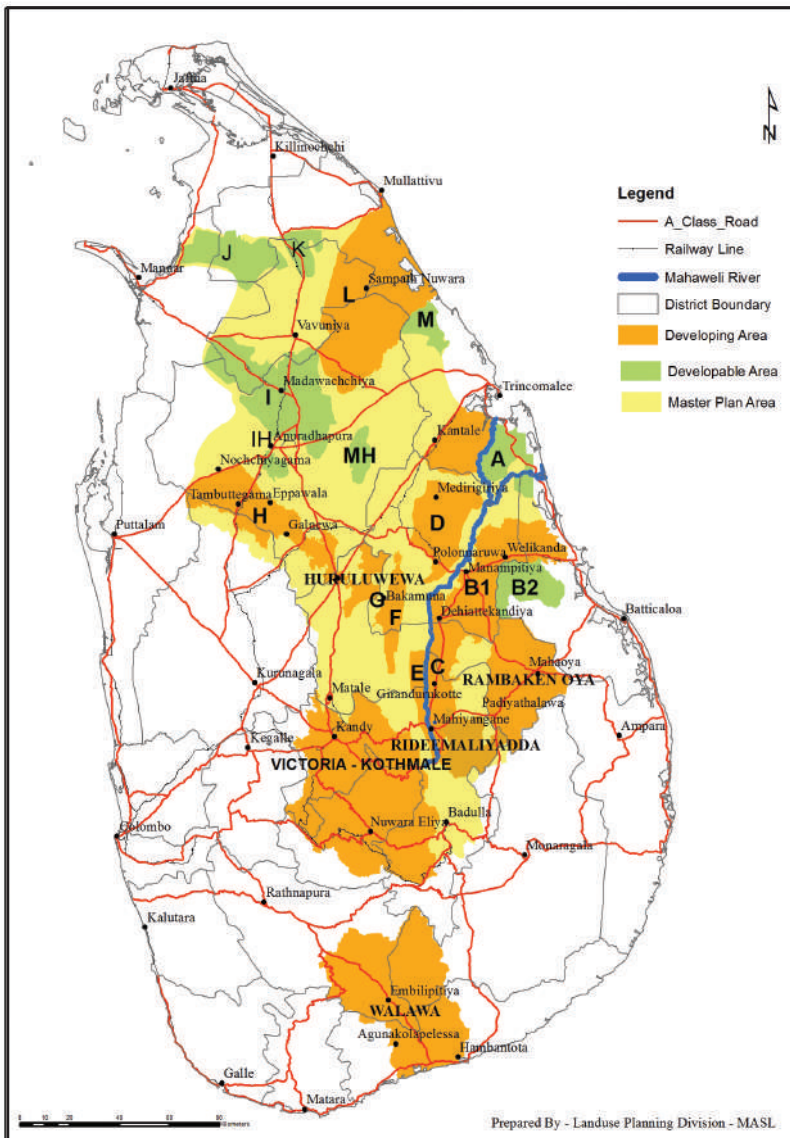


## **Related Map in Mahaweli Areas**



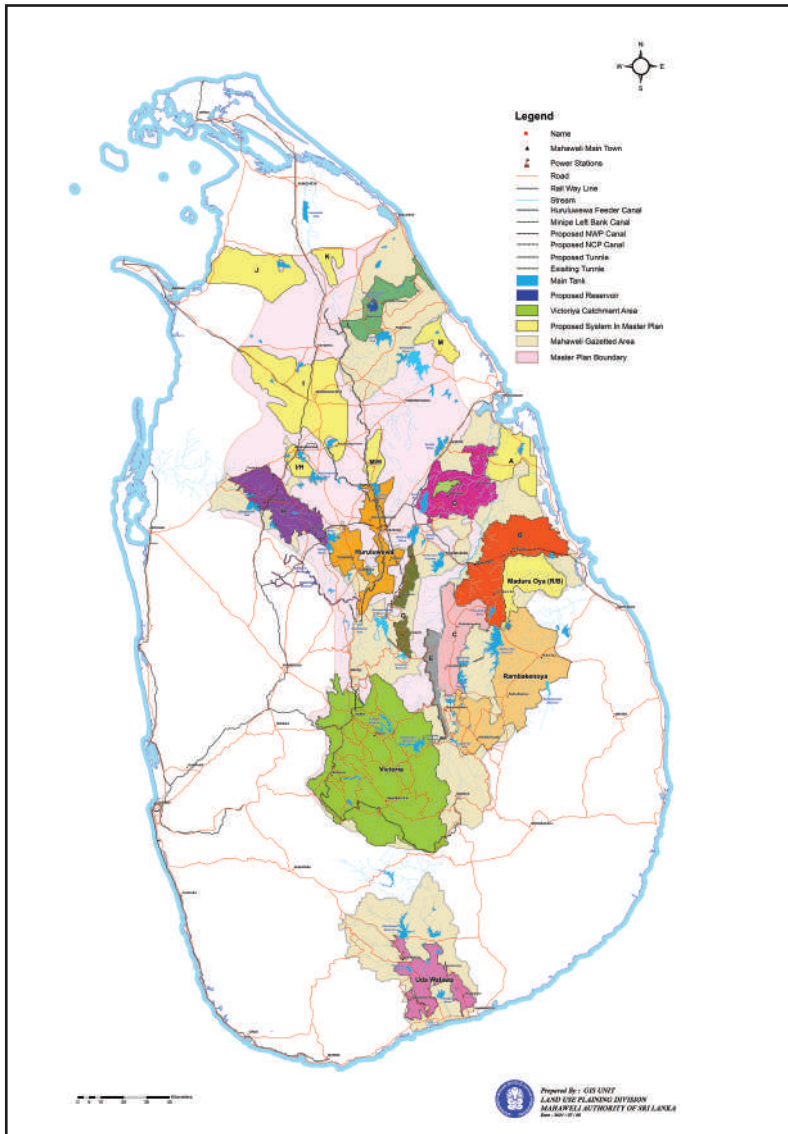
## Related Map in Mahaweli Area

### Mahaweli Development Area



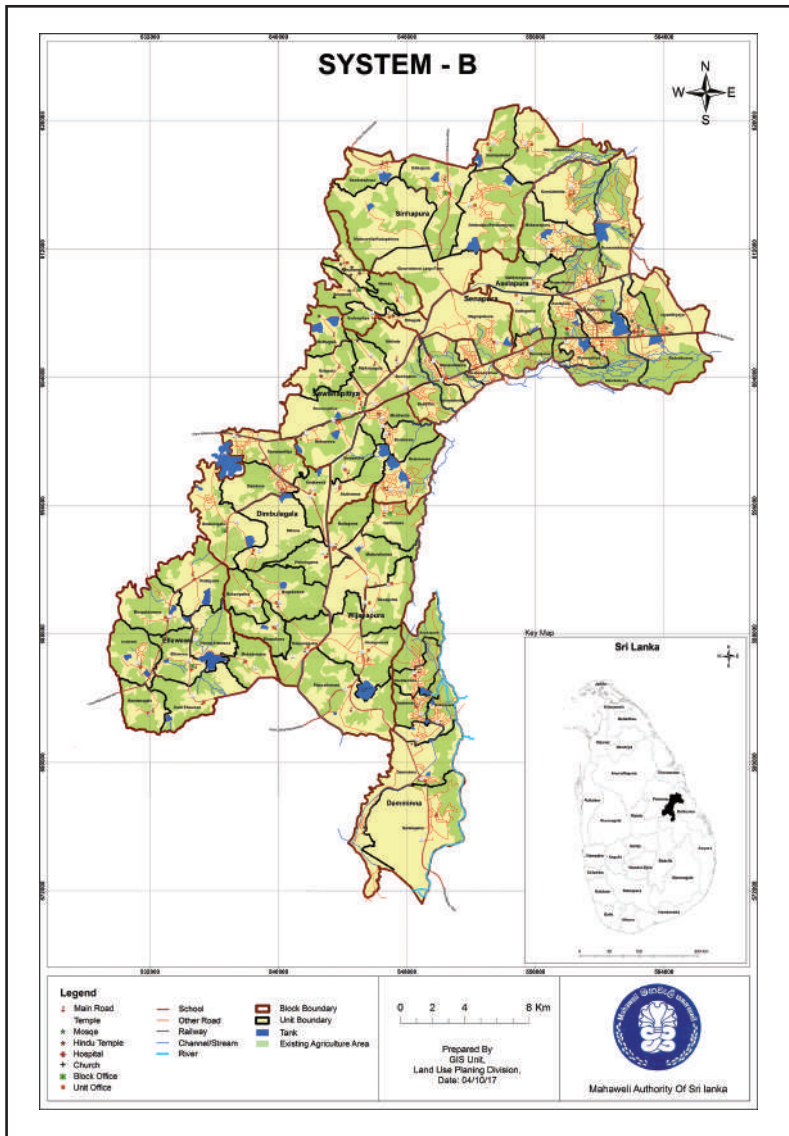
Source: Land Use Planning Division, Mahaweli Authority of Sri Lanka

# Mahaweli Development Area - 2021



Source: Land Use Planning Division, Mahaweli Authority of Sri Lanka

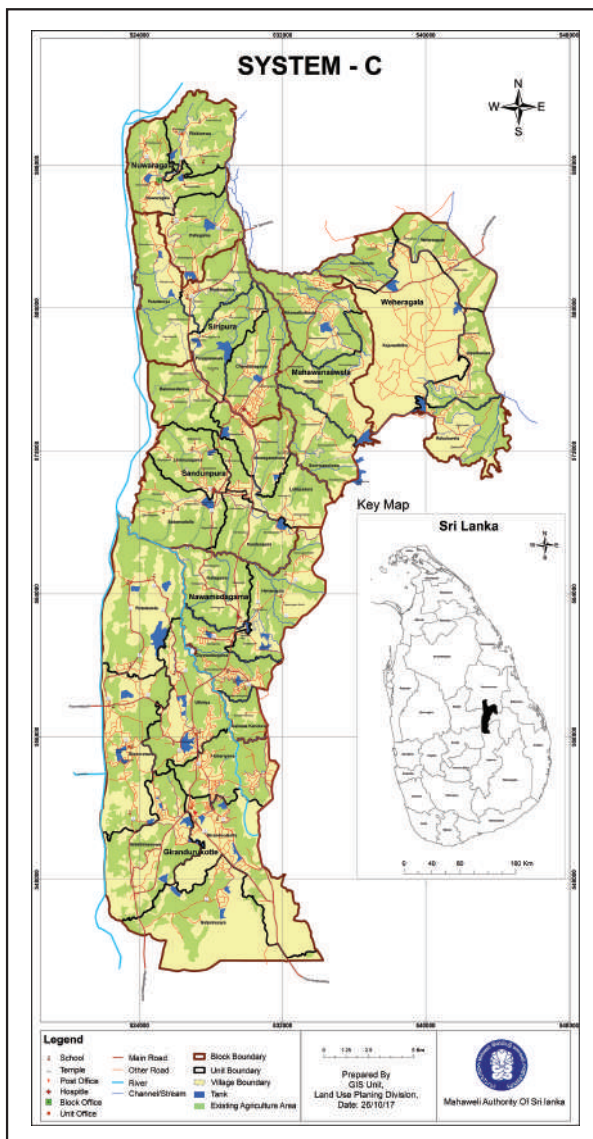
## System B



Source: Land Use Planning Division, Mahaweli Authority of Sri Lanka

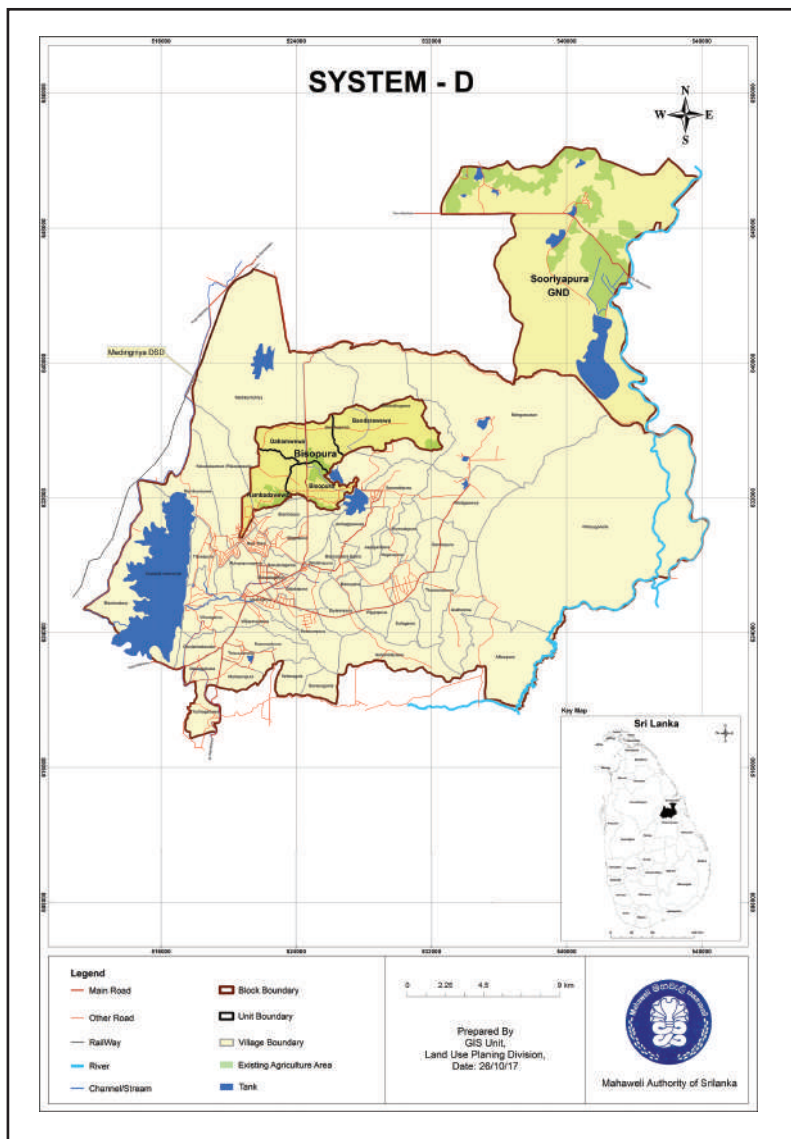


## System C



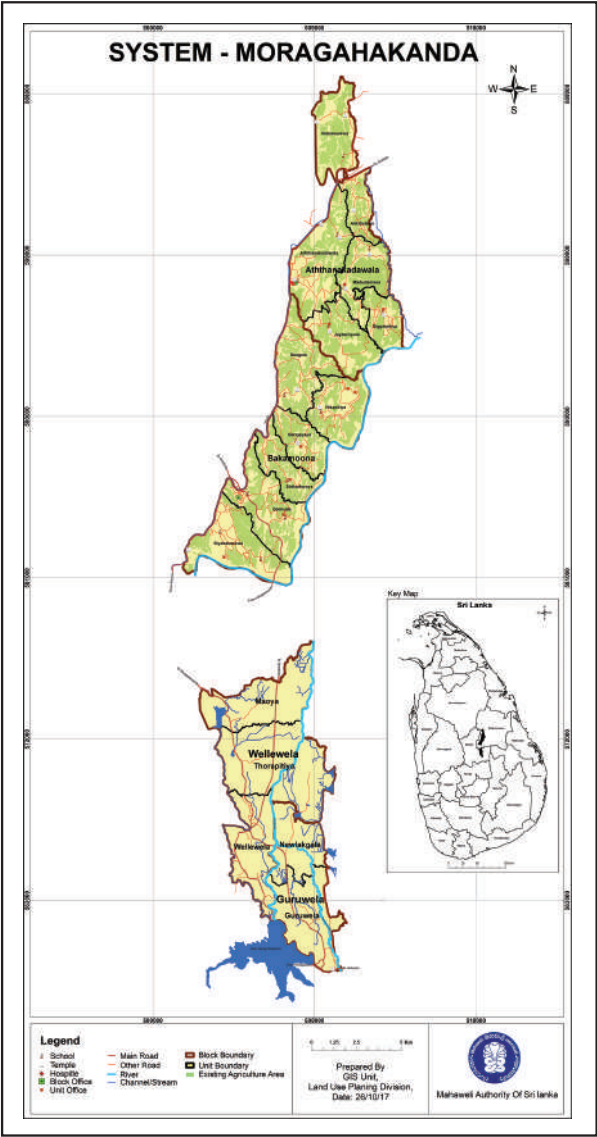
Source: Land Use Planning Division, Mahaweli Authority of Sri Lanka

## System D



Source: Land Use Planning Division, Mahaweli Authority of Sri Lanka

# System G - Moragahakanda



Source: Land Use Planning Division, Mahaweli Authority of Sri Lanka

**SYSTEM - H**

The figure shows a detailed map of the central highlands of Sri Lanka, specifically the area around Nuwara-Eliya. The map is overlaid with a grid. A legend in the top left corner identifies symbols for Temples, Districts, National Parks, Protected Forests, Police Stations, Waterfalls, Urban Areas, Main Roads, Minor Roads, Canals/Streams, Railways, Tunnels, River Boundary, Land Use Classifications, Existing Agricultural Area, and Private Land. An inset map in the bottom right corner shows the entire island of Sri Lanka with a black rectangle indicating the location of the main map's study area.

PMU/MASL



**SYSTEM - HURULUWEWA**

**Legend**

- Temple
- School
- Main Road
- Other Road
- Railway
- Channel/Stream
- Block Boundary
- Unit Boundary
- Tank
- Existing Agriculture Area

**Key Map**

Sri Lanka

Prepared By GIS Unit,  
Land Use Planning Division,  
Date: 05/10/17

Mahaweli Authority of Sri Lanka

PMU/MASL



**SYSTEM - L**

N  
W E  
S

Temple  
School  
Unit Office

River  
Channel/Stream  
Main Road  
Other Road

Block Boundary  
Unit Boundary  
Tank  
Existing Agriculture Area

0 1.25 2.5 5 Km

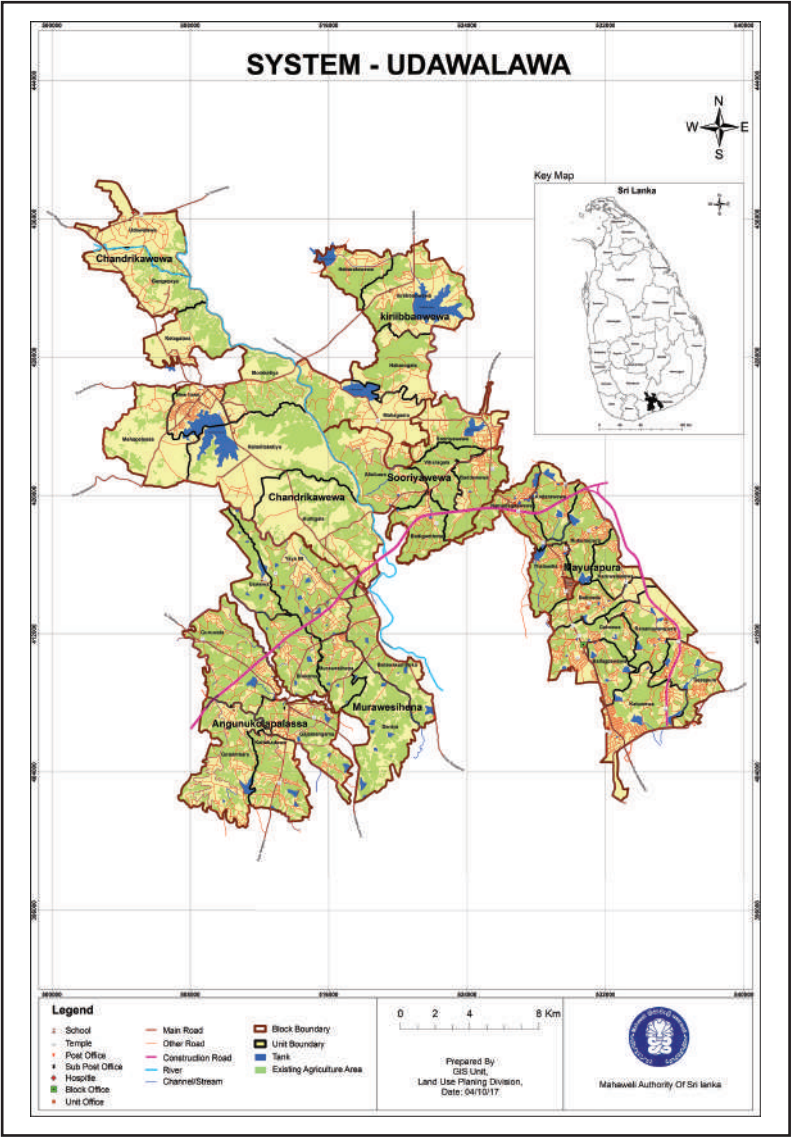
Prepared By GIS Unit,  
Land Use Planning Division,  
Date: 08/10/17

Mahaweli Authority of Sri Lanka

PMU/MASL



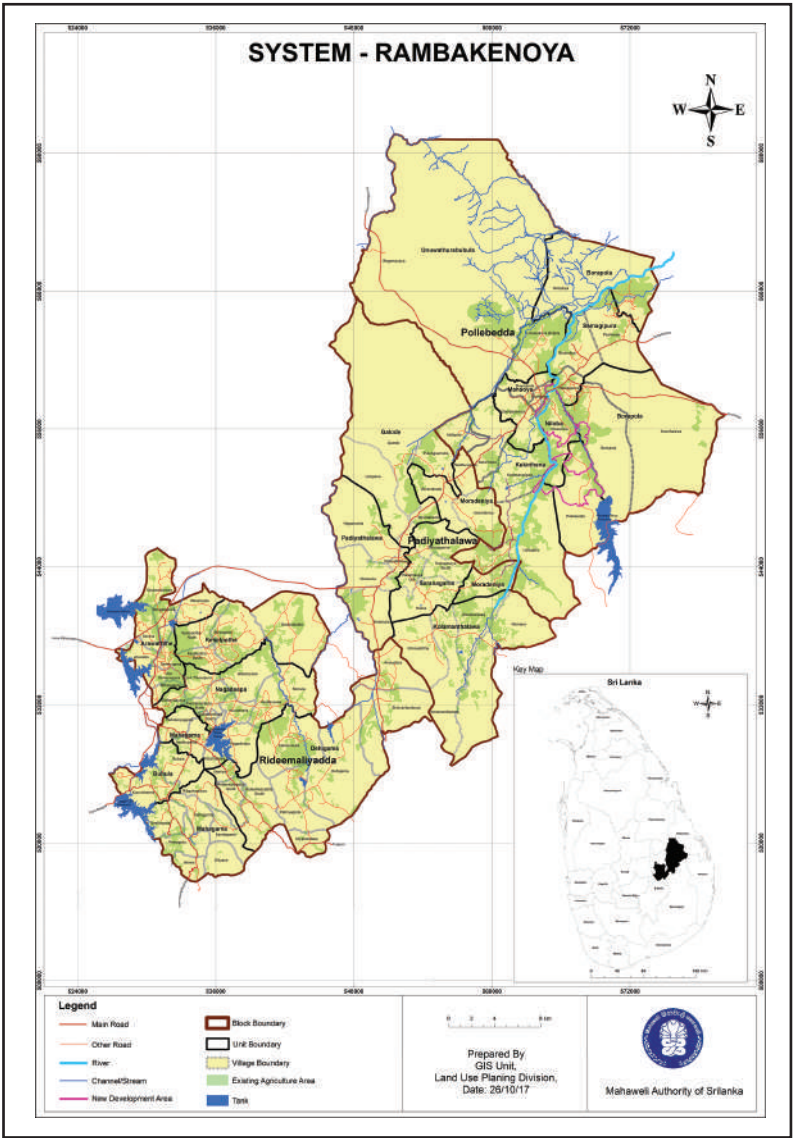
# Udawalawa



Source: Land Use Planning Division, Mahaweli Authority of Sri Lanka



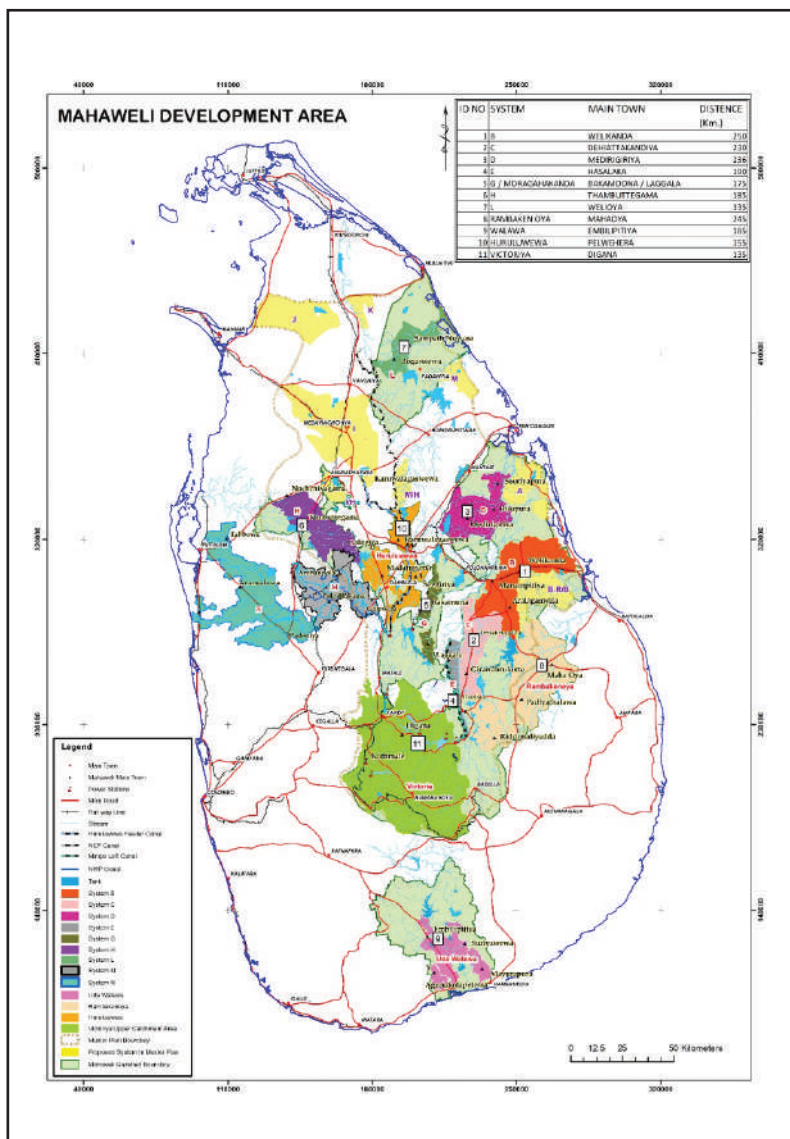
Rambakenoya



Source: Land Use Planning Division, Mahaweli Authority of Sri Lanka

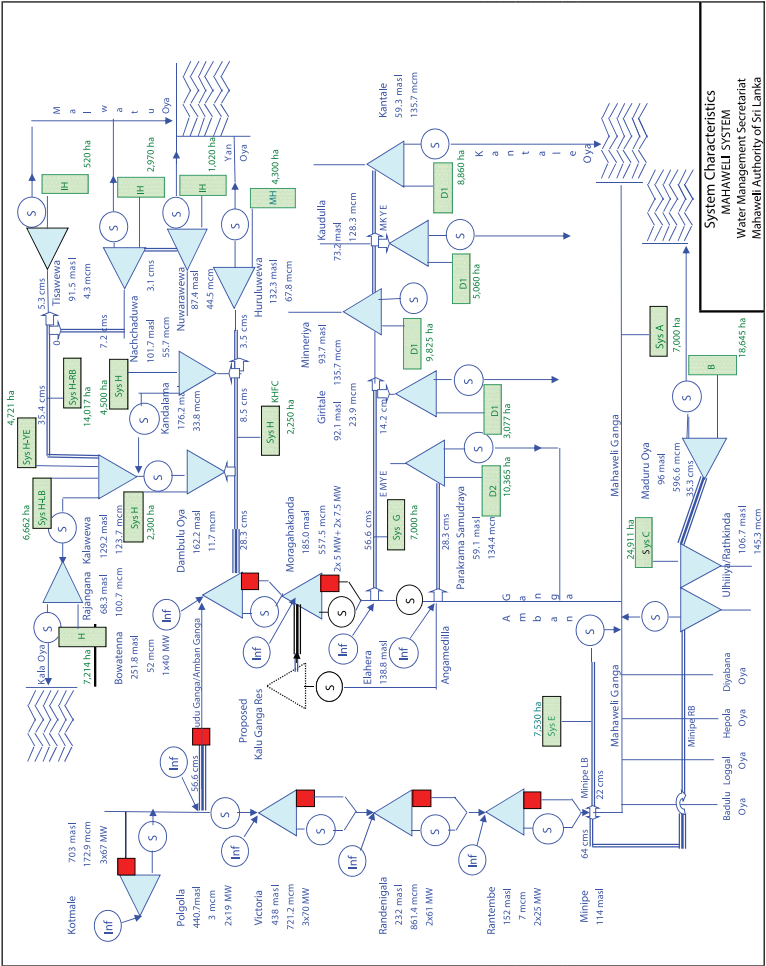


# Road Map of Mahaweli Authority of Sri Lanka



*Source: Land Use Planning Division, Mahaweli Authority of Sri Lanka*

# Water Distribution Diagram



Source: Water Management Secretariat Division, Mahaweli Authority of Sri Lanka

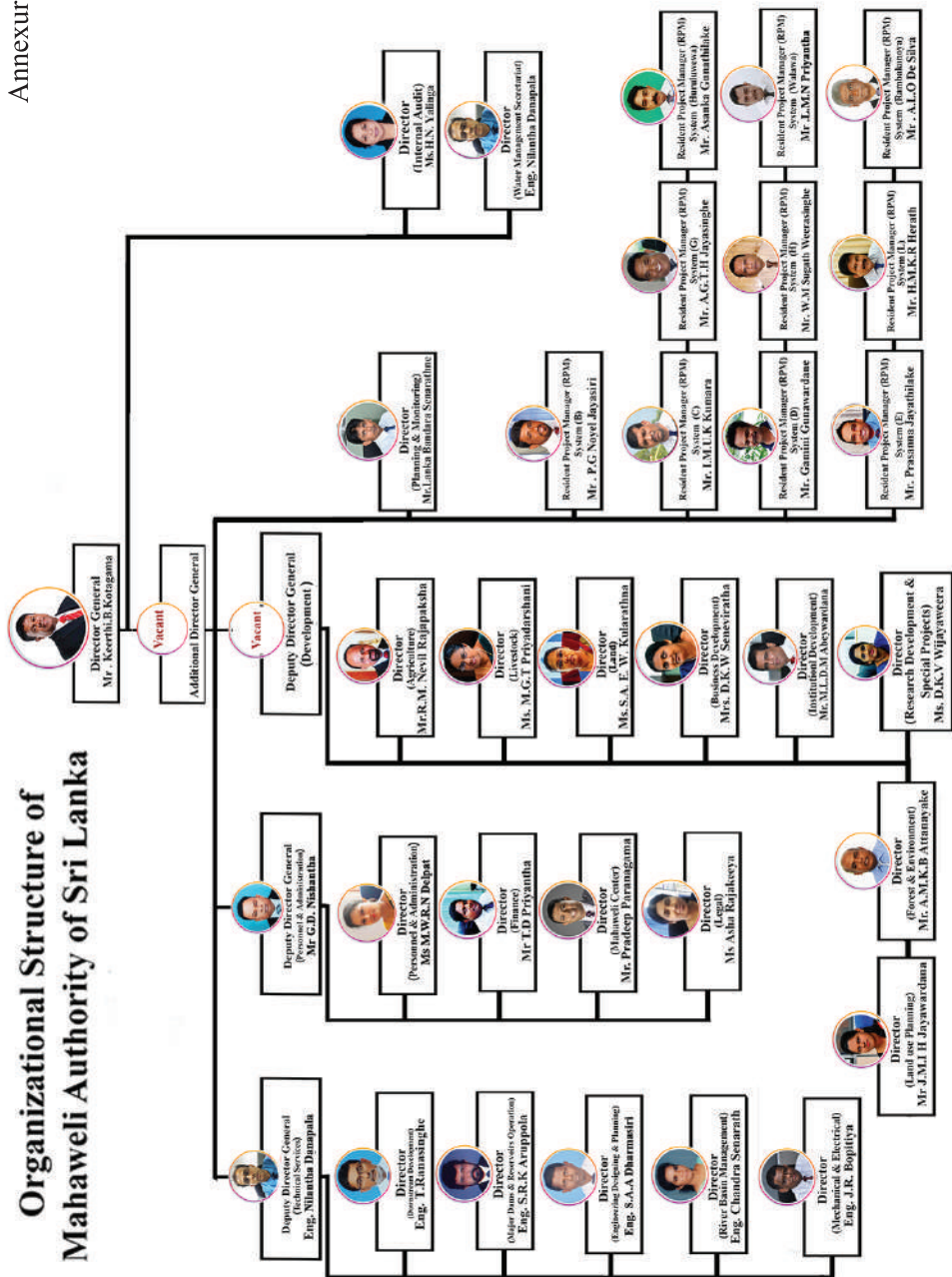
## List of Acronyms

MASL	Mahaweli Authority of Sri Lanka
B	Mahaweli System B
C	Mahaweli System C
G	Mahaweli System G (Moragahakanda)
H	Mahaweli System H
L	Mahaweli System L
UW	Mahaweli System UdaWalawe
Hu	Mahaweli System Huruluwewa
RO	Mahaweli System RanbakenOya
E	Mahaweli System E
F & E	Forest and Environment
MCP	Mahaweli Consolidation Project
LB	Left Bank
GWh	Giga Watt hours
Mw	Mega Watt
MCM	Million Cubic Meters
OFC	Other Field Crops
Mt.	Metric Tons
Ha.	Hectares
D - Canal	Distributary Canal
TEC	Total Estimate Cost
Mn.	Million
CEB	Ceylon Electricity Board
UNDP	United Nations Development Programme
D.S.D.	Divisional Secretariat Divisions

# **General Information of Mahaweli Authority**



# Organizational Structure of Mahaweli Authority of Sri Lanka



## Contact Details of Ministry & Mahaweli Authority of Sri Lanka

### Contact Details of Ministry

Name	Designation	Office
1 Hon. Min. Chamal Rajapaksa	Hon.Minister of Irrigation	011-2688425
2 Hon. Min. Siripala Gamlath	Hon State Minister of Canals & Common Infrastructure Development in Settlements in Mahaweli Zones	011-2684033
3 Mr. Anura Dissanayaka	Secretary (Ministry of Irrigation)	011-2676844
4 Mrs. R.M.C.M.Herath	Secretary (State Ministry of Canals & Common Infrastructure Development in Settlements in Mahaweli Zones)	011-2681062

## Contact Details of Mahaweli Authority of Sri Lanka

Name	Designation	Office
1 Mr. Keerthi .B.Kotagama	Director General	011-2687238
2 Eng. D.M.N.J.Danapala	Dy. Director General (TS)	011-2696436
3 Mr. G.D. Nishantha	Dy. Director General (A&F)	011-2689743
4 Eng. Chandra Senarath	Director (RBM)	025-2264228
5 Eng. S.A.A. Dharmasiri	Director (ED&P)	011-2689741
6 Mr. A.M.K.B.Attanayaka	Director (F&E)	081-2067415
7 Eng. D.M.N.J.Danapala	Director (WMS)	011-2687289
8 Mrs. D.K.V.Wijayaweera	Director (RD&SP)	011-2696629
9 Mr. T.D. Priyantha	Director (Finance)	011-2689957
10 Mr. R.M. Nevil Rajapaksha	Director (Agriculture)	011-2695051
11 Eng. S.R.K. Aruppola	Director (MD&RO)	081-2374393
12 Mrs. S.A.E.W. Kularathna	Director (Land)	011-2689742
13 Mrs. M.G.T.Priyadarshani	Director (LD)	011-2691164
14 Mrs. D.K.W.R.Senavirathna	Director (BD)	011-2689652
15 Eng. T.Ranasingha	Director (DSD)	011-2673264
16 Mrs. H.N. Yalinga	Director (Internal Audit)	011-2695288
17 Mrs. M.W.R.N. Delpat	Director (P&A)	011-2689959
18 Mr. M.L.D.C.M.Abewardhana	Director (ID)	011-2696097
19 Mr. Lanka Bandara Senarathna	Director (PMU)	011-2698957
20 Mrs. J.M.I.H.Jayawardhana	Director (LUP)	011-2687485
21 Mr. Pradeep Paranagama	Director (MC)	011-2699033
22 Eng. J.R.Bopitiya	Director (Ele&Mec)	011-2505675
23 Mrs. Asha Rajakeeya	Deputy Director (Legal)	011-2687232



	<b>Name</b>	<b>Designation</b>	<b>Office</b>
1	Mr. P.G.Noyel Jayasiri	RPM (System B)	027-2259023
2	Mr. I.M.U.K.Kumara	RPM (System C)	027-2250119
3	Mr. Gamini Gunawardhana	RPM (System D )	027-3126360
4	Mr. Prasanna Jayathilaka	RPM (System E)	081-2374001
5	Mr. A.G.T.H.Jayasinghe	RPM (System G )	066-2057830
6	Mr. Sugath Weerasingha	RPM (System H)	025-2276214
7	Mr. H.M.K.R.Herath	RPM (System L)	025-3259277
8	Mr. Asanka Gunathilaka	RPM (Huruluwawa)	066-2285140
9	Mr. L.M.N. Priyantha	RPM (UdaWalawa )	047-2230207
10	Mr. A.L.O. De Silva	RPM (Rambakanoya)	063-2244146

### **For More Information**

Director  
Planning & Monitoring Unit  
Mahaweli Authority of Sri Lanka, No 500, T.B.Jayah Mawatha  
Colombo 10

Tel: 011-2639335/0112639331

Fax: 011-2687498

Email: pmumasl@gmail.com

Web: www.mahaweli.gov.lk

## Important Events of Mahaweli

### Ancient Period

1 BC	First dam across Mahaweli River by King Kootakanatissa at “Meenwila” (Manampitiya)
67 AD	Elahera Canal by King Vasaba
275 -301AD	Elahera Canal extended to Minneriya - Kaudulla by King Mahasena
368 AD	Angamedlla diversion dam across Ambangaga at Angamedilla by King Upatissa 1
571 -604BC	First Diversion of Mahaweli water through “Manimekhala” now Minipe Left Bank Canal, The Trans-Basin canal constructed by King Agbo 1.
853 -857AD	Minipe Ela extended by 47 miles by the King Sena 11.
1153 AD	Parakrama Samudra augmented from the canal called “Akasha Ganga” which originated from Angamedilla by the King Parakramabahu

### (1963 - 2021)

1963	The government decides to make a request to the United Nations to carry out an independent study.
1964 -1968	A Survey of the land water resources of the Mahaweli Ganga by the UNDP/FAO
1968 Sep30	Mahaweli Ganga Diversion at Polgolla commissioned.
1970 Feb 28	Mahaweli Diversion Project inaugurated at Polgolla.
1970 Mar21	Mahaweli Development Board Act No 14 of 1970 passed.
1970 May 3	Mahaweli Authority area gazetted.
1970 May 10	Construction work of the Polgolla Complex started
1972 Jan	Polgolla Complex commenced.
1973 Mar 30	Bowatenna complex inaugurated.
1973 May	Kotmale feasibility study commenced.
1977 Oct 12	The government decision to accelerate the Mahaweli Programme

1978 Jan 30	Construction work of the Ulhitiya Project commenced
1978 Aug 14	The Maduru Oya Project Commissioned
1978 Sep 7	Ministry of Mahaweli Development was established.
1978 Oct 15	Galnewa New Town declared opened.
1978 Dec 21	EEC Agreement to finance the System G Development signed
1979 Feb 4	Construction work of Kotmale project commenced
1979 Mar	Construction work of Ulhitiya commenced.
1979 Apr	Mahaweli Authority of Sri Lanka established
1979 Aug 30	The agreement with USAID for re-forestation signed
1979 Oct 20	Jaya Ganga sluice of Kalawewa opened.
1980 Mar 23	Construction work of the Victoria project commenced.
1980 Apr 10	Works on the Victoria Dam & the Tunnel commenced.
1980 Apr 16	World Bank IDA Loan signed.
1980 June 4	Mahaweli Settlement Division established.
1984 Nov 17	The Kotmale Reservoir impounded
1985 Apr 12	Victoria project commissioned
1985 Aug 23	The Kotmale project commissioned
1986 Mar 23	The Randenigala reservoir impounded
1986 Mar 23	Work on the Rantambe project commissioned
1986 Apr 11	Girandurukotte new towns opened
1988 Mar 28	System "L" gazetted as a special Area under Mahaweli Authority
1988 Nov 11	Welikanda new towns opened
1990 Mar 10	Kotmale new town opened.
1990 May 26	The Rantambe power complex commissioned
1998 Feb 2	Mahaweli Restructuring & Rehabilitation Project (MRRP) established.
1998	6,263 employees (57% of total staff) voluntary retired under the VESP
1999	Mahaweli Consolidation Project (MCP) commenced
1999 June 14	Mahaweli Livestock & Agro Enterprises (Pvt) Ltd incorporated as a subsidiary company of MASL.
1999 July	Natural Resources Management Services (Pvt) Ltd
1999	Mahaweli Engineering Services (Pvt) Ltd
	Mahaweli Venture Capital (Pvt) Ltd

1999	Uda Walawe Left Bank Phase II commenced
2000	Mahaweli Engineering and Construction Agency (MECA) closed down.
2000 Jan	Village Self Help Learning Initiative Project (VSHLI) was initially implemented under MRRP
2001 Jan 10	Mahaweli River Basin Management Division was established under MRPP
2005 May	Mahaweli student hostel opened
2005 Nov 5	Dambulla - Bakamuna - Kalagahawela Road opened to the public
2007 Jan 25	Moragahakanda Project inaugurated
2008 Aug 14	Inauguration Ceremony of Dam Safety & Water Resources Planning Project.
2008 Dec 31	Uda Walawe Left Bank phase I I completed.
2009 Jan 3	Moragahakanda Office complex inaugurated
2009 Apr 30	Rehabilitation & Modernization of Chandrikawewa & the opening of the “Mahaweli Buddhi Mandapaya” at Ambilipitiya
2010	Rambaken Oya gazette as special area under MASL
2010	Signed MOU with Cargill’s food city for purchasing agricultural production of H and G Mahaweli farmers
2010 Feb 23	Wellewela Block Manager’s Office opened
2010 Sep 1	Rambaken Oya nominated as Mahaweli Resident Project Manager’s area
2010 Dec 8	Signed MOU with Regional Development Bank for SME Loan scheme “Mahaweli Saviya”
2011 April 28	Pollebedda block office opened
2011 May 14	Redimaliyadda block office opened
2011 Aug 16	Udawalawa, Kandalama, Bowathenna boat service commenced
2012 Mar 10	Hansaya palama and Sandunpura paddy stores opened
2012 Nov	Kotmale International Training Institute opened
2013 Jan 7	Signed MOU with People’s Bank for SME Loan Scheme “Mahaweli Aruna”

2013 July 20	First water released on Rambaken Oya reservoir
2013 Sep	Hand over 500 houses built in Welioya under sustainable development project
2013 Oct 21	National irrigation Museum opened at the Mahaweli center
2013 Nov 25	First NVQ - 4 Certificate awarded ceremony behalf of agriculture sector at the Mahaweli center
2014 Feb	MOU Signed with Regional Development Bank for SME Loan Scheme “Govi Shakthi”
2014 Feb 15	Protection of Mahaweli River Basin at Gatambe commenced
2014 Mar 12	Kaluganga Reservoir construction Contract was awarded with Sino hydro, China
2014 Mar 17	Burial of Relics in Kotmale Mahaweli Stupa
2014	Flowered agreement the purchasing agricultural production of system L with Cargill’s
2014 Sep 4	Human resource management center opened at Rathmalana
2015 April	Commencement of construction of the main dam of the Kalu Ganga reservoir.
2015 Nov 6	Burial of Treasures in Moragahakanda Reservoir.
2016 June 20	Kotmale Mahaweli Maha Seya was opened for the worship of the devotees.
2016 July 25	Burial of treasures in the main dam of the Kalu Ganga reservoir.
2016 Oct 26	Signing of the agreement related to the construction work of Maduru Oya Left Bank Development Project.
2017 Jan 11	Commencement of water storage of Moragahakanda Reservoirs
2018 Jan 8	Opening of Moragahakanda Reservoir to the public and release of water to the downstream development.

- 2018 July 23 Commencement of Construction of Moragahakanda Kaluganga tunnel  
Addition of Moragahakanda Power plant (25 MW) to national power grid  
The unveiling of the stone Aukana Buddha statue created on the left bank of the Moragahakanda Reservoir.
- 2019 Jan 8 The Pallegama Laggala town which was submerged in the Kalu Ganga Reservoir was replaced by the new Laggala Green Town and the Kalu Ganga Reservoir completion ceremony was held.
- 2019 April 9 Signing of a Memorandum of Understanding between the Ministry of Power and Energy and Commercial Development and the Commercial Corporation of Canada for the construction of a 100 MW Floating Solar Power Plant at Maduru Oya.
- 2019 June 9 Opening of the Mahaweli Apparel Company and the Mahaweli Handicrafts Institute to the public at Bisopura Mahaweli Block in the Mahaweli system D.
- 2019 July 22 Gazetting of Minipe and Wilgamuwa Divisional Secretariats as Special Areas under MASL
- 2019 Oct 1 The Mahaweli Entrepreneurship Awards Ceremony was held at the Bandaranaike International Conference Hall, Colombo.
- 2019 Nov 7 Issuing water of the Kalu Ganga reservoir and handing over the new town of Ambana to the people.
- 2020 Feb 22 Renovation of Nuwara Eliya circuit bungalow and opening to the public.
- 2020 Feb 28 Opening of Hela Bojunhala in Madatugama Block
- 2020 June 24 Release of water from Kandepitawala tank of Kalu Ganga reservoir project.
- 2020 Nov 6 Opening of Diggalpitiya and Yaya 19 Diriya Liya outlet in Attanakadawala and Bakamuna Block.
- 2021 Jan 10 Opening of Hela Bojunhala in Girandurukotte under the One stop Shop Development Program.

2021 Jan 16	Opening of Dahamwewa Mahaweli Primary School and sub post office in Bisopura Block.
2021 Mar 30	Opening of a new mechanical workshop at Dehiattakandiya.
2021 June 24	Opening of Hela Bojunhala, bus stand, Dahamwewa housing project and Health Center in Bisopura Block
2021 June 24	Reopening of Kalawewa Circuit Bungalow.
2021 July 30	Opening of Jayasiripura Diriya Liya outlet in Attanakadawala Block.
2021 Sep 6	Declaration of the land area under North Western Main channel and Daduru Oya irrigation development project as a Mahaweli special economic zone.
2021 Oct 13	Opening of seed protection and propagation center in Galnewa Block.

ඉල්ලුවට වඩා වැඩියෙනුත් දීම තව ඕනෑම කියලා ඇහුවේ

**අම්මා විතරයි!**

**ආහ්වා**  
**අම්මා**



ශ්‍රී ලංකා මහවැලි අධිකාරිය  
நீரவளக மற்றும் சுழிக்குற சாலை  
MAHAWELI AUTHORITY OF SRI LANKA



**PLANNING AND MONITORING UNIT, MAHAWELI AUTHORITY OF SRI LANKA**

No. 500, T.B. Jayah Mawatha, Colombo 10, Sri Lanka.

Tel.+94 11 269 8957 Fax. +94 11 268 7498

Web : [www.mahaweli.gov.lk](http://www.mahaweli.gov.lk) E-mail : [pmumas1@gmail.com](mailto:pmumas1@gmail.com)